



INNOVATIVE CYCLING INFRASTRUCTURE SOLUTIONS



Cycling infrastructure can change

COMMUNITIES

Saris Infrastructure considers the bicycle a serious form of transportation.

We strive to make commuting by bicycle more accessible, and encourage more people to ride more often. Bicycle parking is often the last piece of the commuting puzzle. It's essential to provide a safe place for people to park and store their bikes. We design our parking products with the cyclist in mind, so that parking your bike is not so complicated. Our goal is to give cyclists the peace-of-mind that their bikes will be parked securely.

**WE BELIEVE THAT CYCLING CAN CHANGE THINGS FOR THE BETTER.
BECAUSE THAT'S WHERE ITS REAL POWER LIES.**

For more than 20 years, Saris has worked to bring the power of cycling to life through bicycle advocacy. We focus our efforts on making a difference for all cyclists on local, state and national levels through partnerships with organizations such as League of American Cyclists, People for Bikes, the Bicycle Federation of Wisconsin and Vision Zero.



WAYS TO REACH US

800-783-7257

www.sarisinfrastructure.com
sales@sarisinfrastructure.com

Saris Infrastructure
5253 Verona Road
Madison WI 53711

Follow us on social media:



facebook.com/sarisinfrastructure

MANUFACTURES WARRANTY

We warrant this product to the first consumer to be free from defect in material and workmanship for a period of one year from date of purchase. (Please retain your sales slip for your records.) Any product or part thereof found to be defective within that period will be replaced without charge provided that: (1) the product was not misused; (2) no alterations or modifications were made; (3) its failure resulted from a defect in material or workmanship and not from normal wear expected in the use of the product; (4) the product or part is delivered, freight prepaid, to Saris Cycling Group. Manufactures only obligation shall be to replace such products or parts proved to be defective. Damage to mounting surface is not covered under warranty.

DESIGN GUIDELINES

OUTDOOR/SHORT TERM PARKING

A bike parking area at a school, on a city street, or outside of any building is a valuable asset. Having the right plan for your bike parking area will ensure it is a convenient and effective space and is inviting to the user.

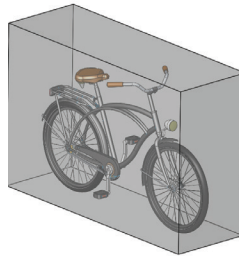
Features of good outdoor parking:

- Convenient to the cyclist's destination; placed no more than 50' from the door
- Located in a high-traffic area; within eye shot of destination and along adjacent bikeways/streets
- Identified by a sign
- Weather-protected, situate racks under existing structures or installing free-standing structures when possible
- Spaced so that the cyclist can access the side of the bikes, and there is no handle bar confliction (recommended aisle way of 60"; space between racks at 36")
- Proper aisle way spacing to avoid handlebar/rack/basket conflicts
- Aisle spacing should
 - Allow for simultaneous users
 - Accommodate lifting of bikes (when using two-tier racks)
 - Consider entry and exit flows

SIZE OF A TYPICAL BIKE

72"L x 48"H x 24"W

6 ft. L x 4 ft. H x 2 ft. W



DESIGN GUIDELINES

INDOOR/LONG TERM PARKING

A bike storage facility at your condo, apartment complex, residence or workplace can be one of the most used areas on the property. The right location and the right layout can ensure convenience as well as added security.

Features of good indoor parking:

- Balance the space available with desired capacity to ensure that enough space is allotted and that the configuration of the room accommodates desired capacity with the selected rack footprint and aisle ways (48" minimum aisle way, 60" is preferred)
- Weather protection:
 - Free-standing shelter
 - Indoor enclosure or room
- Easy access with effective signage
- Controlled access (keycard or code)
- Lockers (keyed or smartcard)
- Surveillance cameras or security guards
- Accommodates room ceiling height and obstructions in the room



BIKE DOCK



SARIS
INFRASTRUCTURE



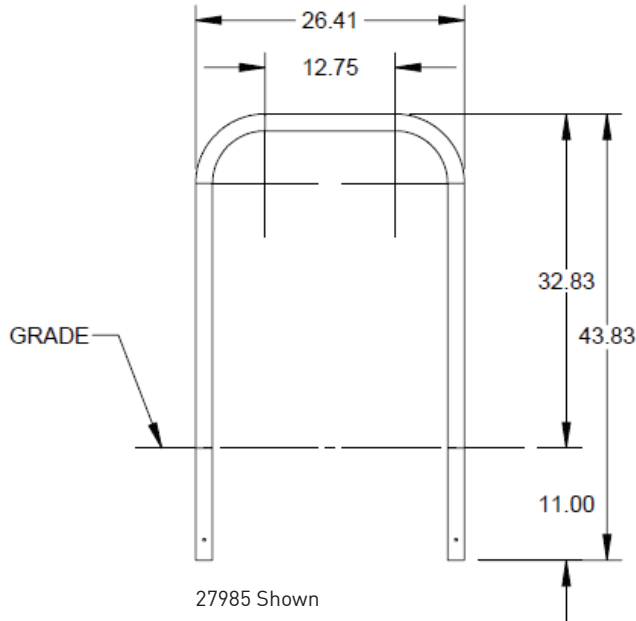
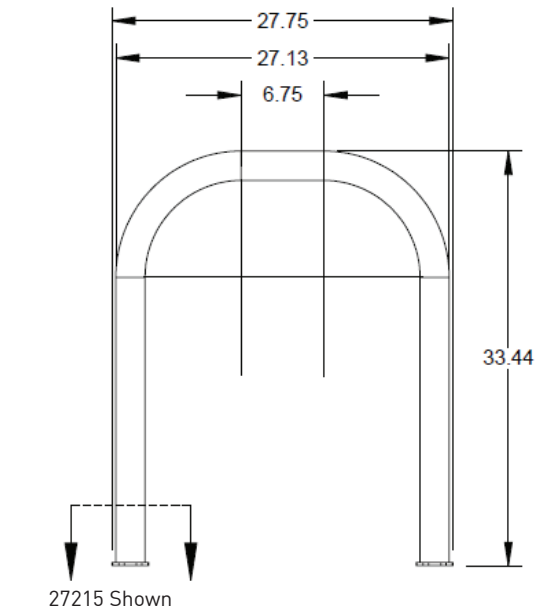
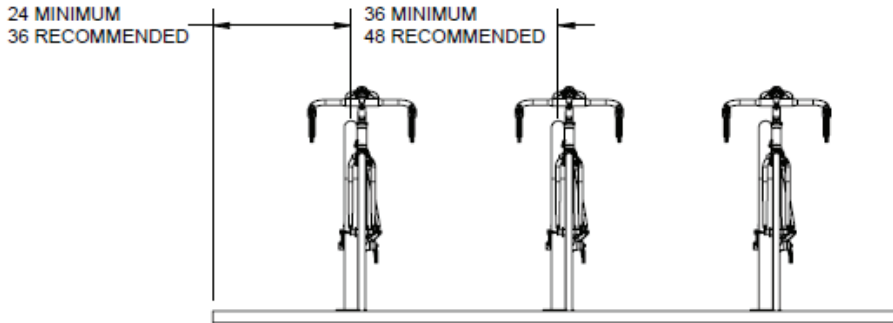
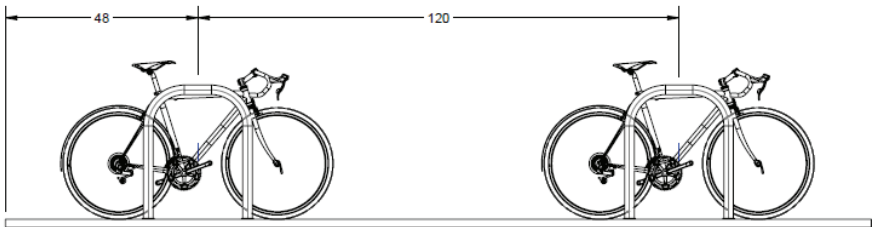
The bike dock is a simple and intuitive design that provides efficient, high security bike parking. This bike rack accommodates two bikes, supporting them at two points and allowing u-lock compatibility of both the wheel and bike frame. One of most popular bike racks in the world.

Product Specifications

- 1.66" OD Schedule 10 pipe – most affordable solution
- 2 3/8" OD Schedule 40 pipe – larger diameter pipe leaves less space between the lock and rack, which provides better security
- Accommodates two bikes
- Offers 2 points of contact for bike security
- Meets APBP bike parking guidelines

Bike Dock

Recommended Setbacks



Dimensions						
Model #	# Bikes	Type of Mount	Weight	Length	Height	Width
2.375"						
27215	2	Flange	26 lbs.	33.44"	27.75"	5.25"
27941	2	Below Grade	32 lbs.	44.19"	27.125"	2.375"
1.66"						
27933	2	Flange	18 lbs.	33.08"	27.75"	5.25"
27985	2	Below Grade	20 lbs.	43.83"	26.41"	1.66"



2 bikes



1.66" Schedule 10 pipe
2.375" Schedule 40 pipe



Powder Coat
Galvanized



Temporary: 6264
(install kit: 25683)
Temporary
Secure: 6260
(install kit: 26268)
Permanent: 6265



1 year
warranty



Made in
the USA

Anchors must be purchased separately



Standard Colors



Flange Mount



Below Grade
Mount

Downloadable product resources available online:



CAD Files



SketchUp Files



Written Specs



Photos

Our Saris Infrastructure representatives can assist with custom layout and spacing to meet your room dimensions and desired bike capacity.

Saris Infrastructure 800.783.7257

www.sarisinfrastructure.com

CUSTOM-BRANDED BIKE DOCK



SARIS
INFRASTRUCTURE



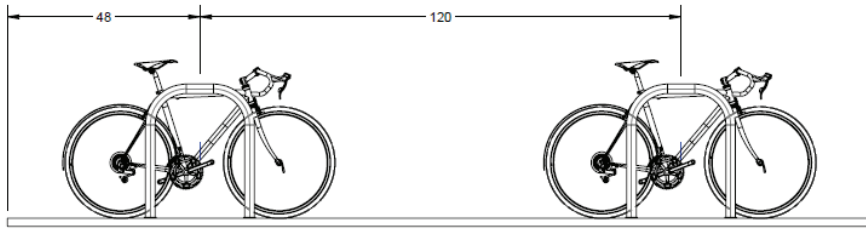
Sky's the limit on how to use this bike parking rack to communicate and re-inforce your brand. Custom designed plate added to standard bike dock makes a big statement in a cost effective manner. Create a permanent billboard that advertises your bike-friendliness.

Product Specifications

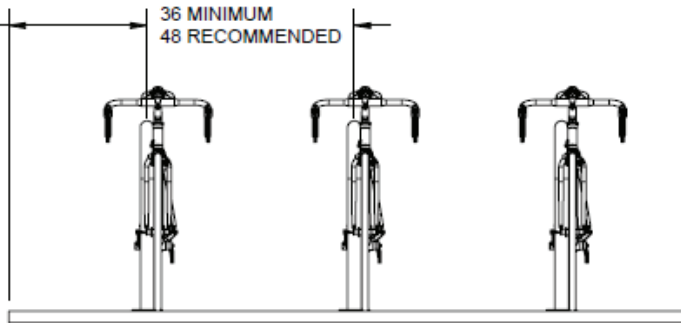
- Available in 2.38" round pipe and 2" square tube
- Accommodates two bikes
- Offers 2 points of contact for bike stability
- Meets APBP bike parking guidelines

Custom-Branded Bike Dock

Recommended Setbacks



24 MINIMUM
36 RECOMMENDED



36 MINIMUM
48 RECOMMENDED



2 bikes



2.375" Schedule
40 pipe
2" square tube



Powder Coat



Temporary: 6264
(install kit: 25683)
Temporary
Secure: 6260
(install kit: 26268)
Permanent: 6265



1 year
warranty



Made in
the USA

Anchors must be purchased separately



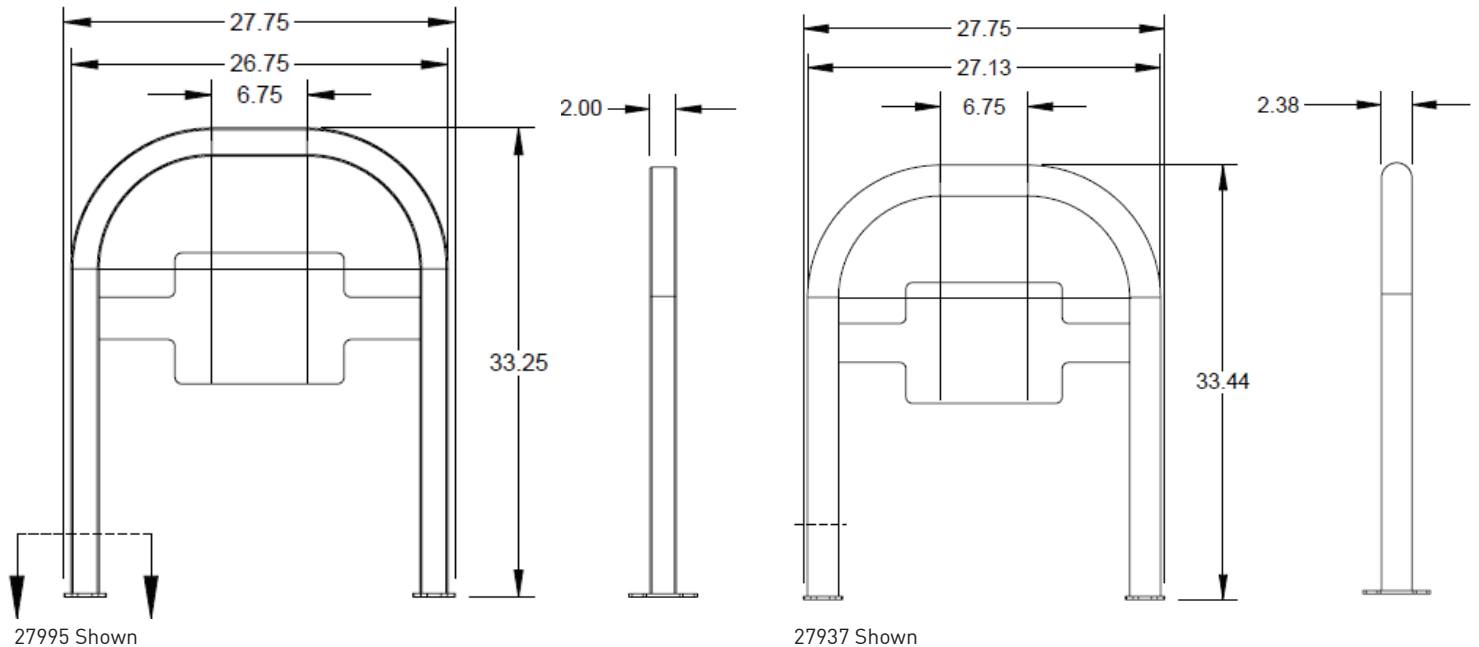
Standard Colors



Flange Mount



Below Grade
Mount



Dimensions

Model #	# Bikes	Type of Mount	Weight	Length	Height	Width
2.375"						
27937	2	Flange	32 lbs.	33.44"	27.75"	5.25"
28011	2	Below Grade	39 lbs.	44.19"	27.13"	2.375"
2" Square						
27995	2	Flange	38 lbs.	33.25"	27.75"	5.25"
28012	2	Below Grade	46 lbs.	44"	26.75"	2"

Downloadable product resources available online:



CAD Files



SketchUp Files



Written Specs



Photos

Our Saris Infrastructure representatives can assist with custom layout and spacing to meet your room dimensions and desired bike capacity.

Saris Infrastructure 800.783.7257

www.sarisinfrastructure.com

SQUARE TUBE BIKE DOCK



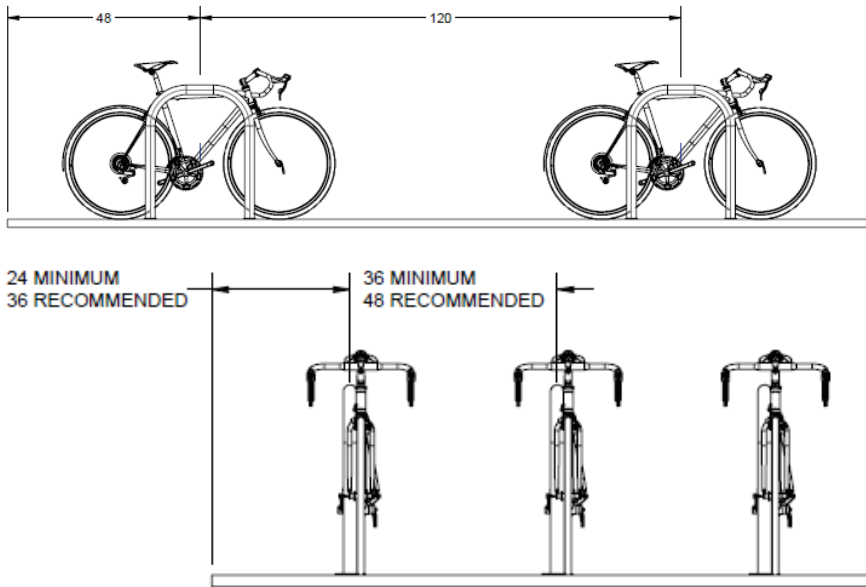
It's hip to be square. Troublemakers wielding pipe-cutters will have to look elsewhere if bike stealing mischief is on their minds. The 2" square tube provides extra protection by preventing a round-tubed pipe cutter from securing to and rotating around the bike rack.

Product Specifications

- 2"x2"x3/16" structural square tube- square tubing resists efforts from thieves using pipe cutters
- Accommodates two bikes
- Offers 2 points of contact for bike stability
- Meets APBP bike parking guidelines

Square Tube Bike Dock

Recommended Setbacks



2 bikes



2" Square,
Schedule 40
pipe



Powder Coat
Galvanized



Temporary: 6264
(install kit: 25683)
Temporary
Secure: 6260
(install kit: 26268)
Permanent: 6265



1 year
warranty



Made in
the USA

Anchors must be purchased separately



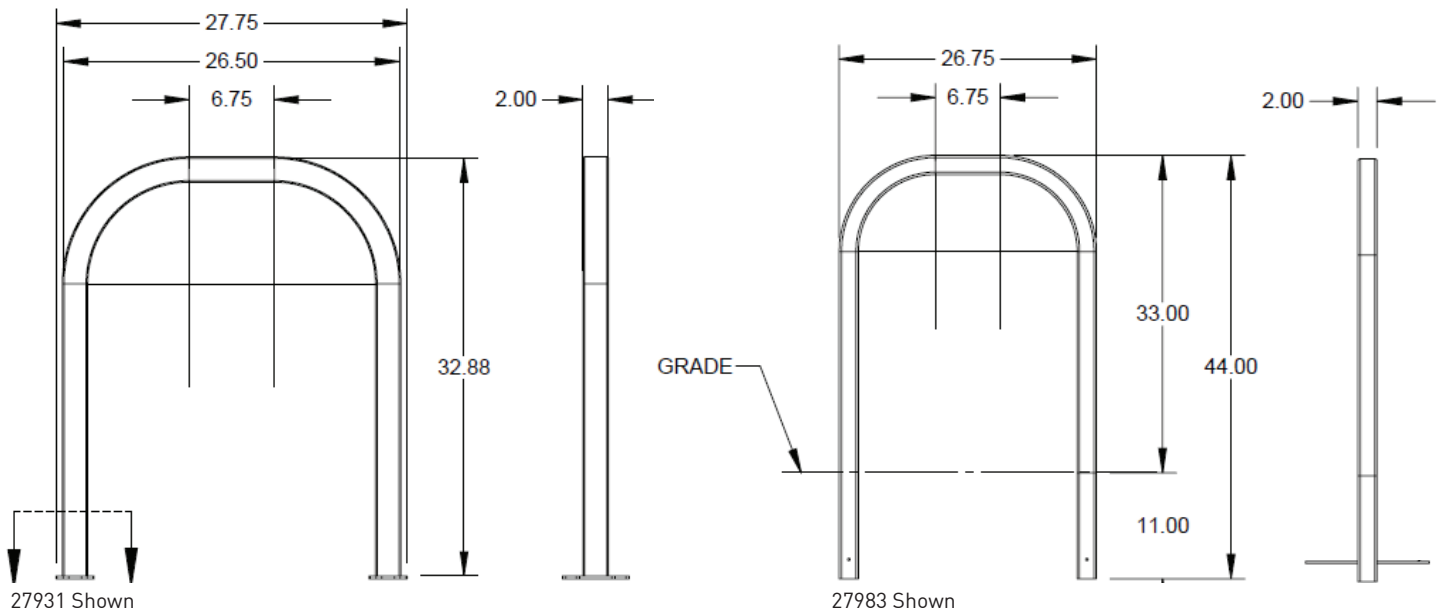
Standard Colors



Flange Mount



Below Grade
Mount



Dimensions

Model #	# Bikes	Type of Mount	Weight	Length	Height	Width
27931	2	Flange	33 lbs.	33.25"	27.75"	5.25"
27983	2	Below Grade	38 lbs.	44"	26.75"	2"

Downloadable product resources available online:



CAD Files



SketchUp Files



Written Specs



Photos

Our Saris Infrastructure representatives can assist with custom layout and spacing to meet your room dimensions and desired bike capacity.

Saris Infrastructure 800.783.7257

www.sarisinfrastructure.com

HIGH SECURITY BIKE DOCK



SARIS
INFRASTRUCTURE



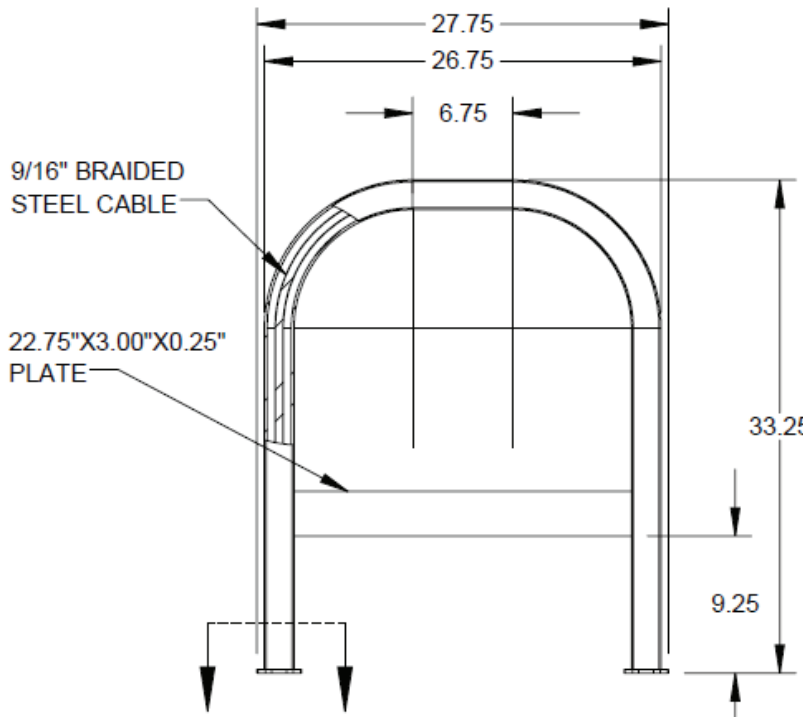
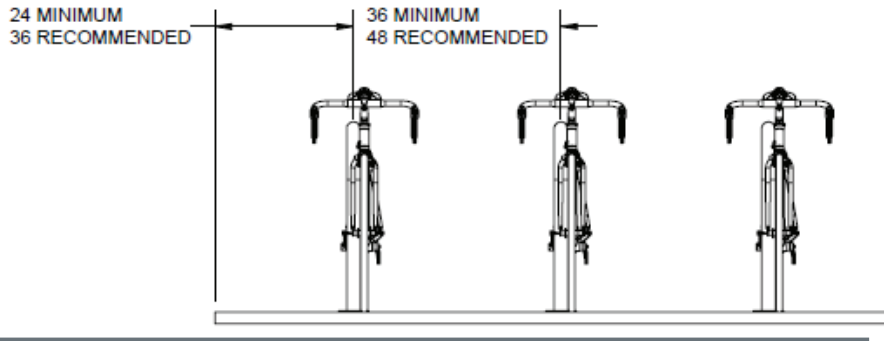
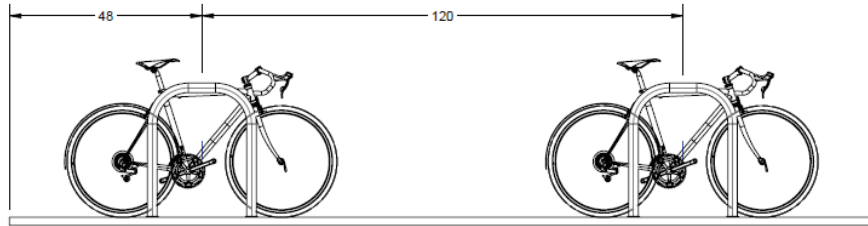
The best of the best. We thwart the bike thief at every turn. Pipe-Cutter? Nope, this bike rack has 2-inch square tubing. Reciprocating saw? Nope, a braided steel cable is hidden inside. Anchors compromised? Nope, reinforced 3" steel lean bar which is .25" keeps bike secure. We've designed the ultimate in bike parking security and storage to keep the thieves at bay, and your mind at ease.

Product Specifications

- 2"x2"x3/16" structural square tube – square tubing resists efforts from thieves using pipe cutters
- 9/16" braided steel cable internally welded to obstruct use of reciprocating saw to cut through dock
- 3" steel plate to prevent bike theft through anchor removal
- Accommodates two bikes
- Offers 2 points of contact for bike stability
- Meets APBP bike parking guidelines

High Security Bike Dock

Recommended Setbacks



2 bikes



2" Square



Powder Coat
Galvanized



Temporary: 6264
(install kit: 25683)
Temporary
Secure: 6260
(install kit: 26268)
Permanent: 6265



1 year
warranty



Made in
the USA

Anchors must be purchased separately



Standard Colors



Flange Mount

Dimensions

Model #	# Bikes	Type of Mount	Weight	Length	Height	Width
27976	2	Flange	43 lbs.	33.25"	27.75"	5.25"

Our Saris Infrastructure representatives can assist with custom layout and spacing to meet your room dimensions and desired bike capacity.

Saris Infrastructure 800.783.7257

www.sarisinfrastructure.com

Downloadable product resources available online:



CAD Files



SketchUp Files



Written Specs



Photos

STAINLESS STEEL BIKE DOCK



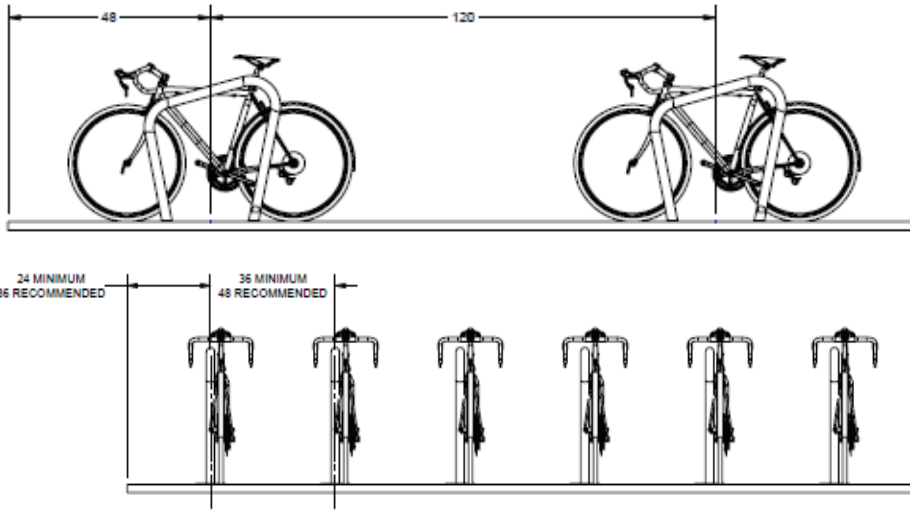
Luxurious and graceful, our stainless-steel bike rack offers architectural elegance to any project. Design offers multiple installation options that can add style and beauty to your bike parking or overall building project. Meets all APBP bike parking standards and is quite attractive in the process.

Product Specifications

- 2.375", schedule 40, 304 stainless steel pipe
- Brushed finish
- Accommodates two bikes
- Offers 2 points of contact for bike stability
- Meets APBP bike parking guidelines

Stainless Steel Bike Dock

Recommended Setbacks



2 bikes



2.375", Schedule 40,
304 Stainless Steel
Pipe



Brushed



Temporary: 6264
(install kit: 25683)
Temporary
Secure: 6260
(install kit: 26268)
Permanent: 6265



1 year
warranty



Made in
the USA

Anchors must be purchased separately



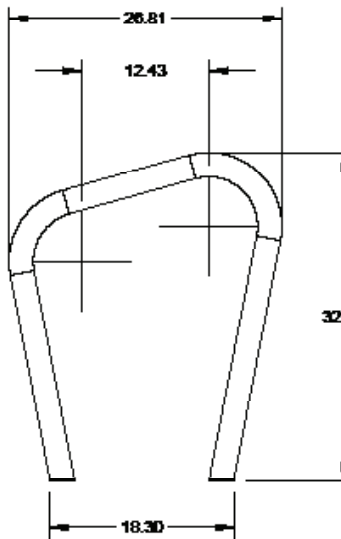
Standard Colors



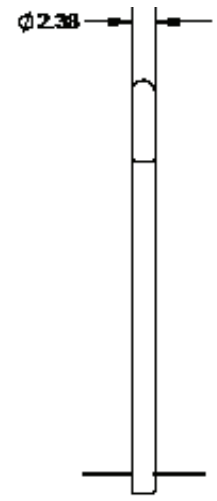
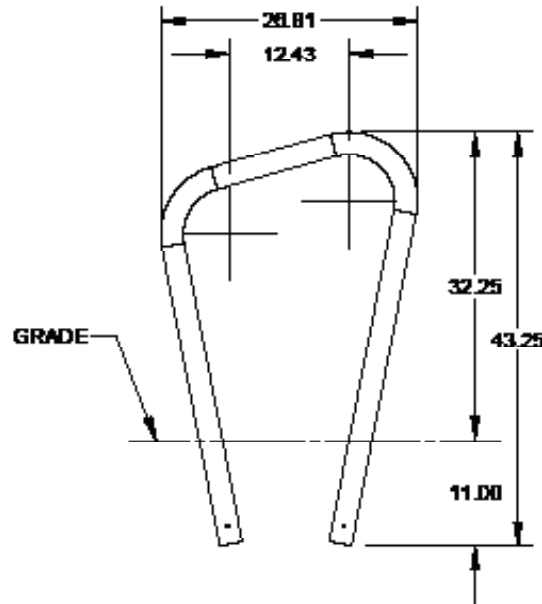
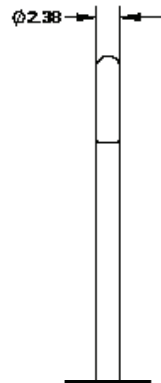
Flange Mount



Below Grade
Mount



27966 Shown



Dimensions

Model #	# Bikes	Type of Mount	Weight	Length	Height	Width
27966	2	Flange	24lbs.	26.81"	32.25"	2.38"
28363	2	Below Grade	35 lbs.	26.81"	43.25"	2.38"

Downloadable product resources available online:



CAD Files



SketchUp Files



Written Specs



Photos

Our Saris Infrastructure representatives can assist with custom layout and spacing to meet your room dimensions and desired bike capacity.

Saris Infrastructure 800.783.7257

www.sarisinfrastructure.com

CARGO BIKE DOCK



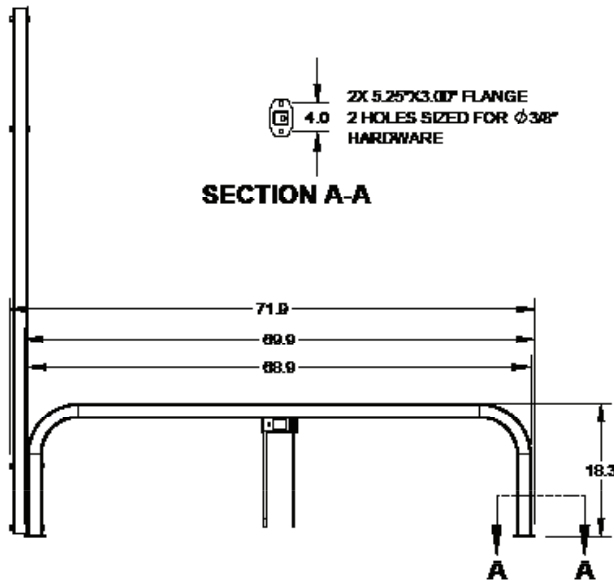
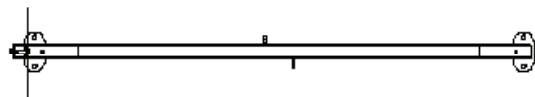
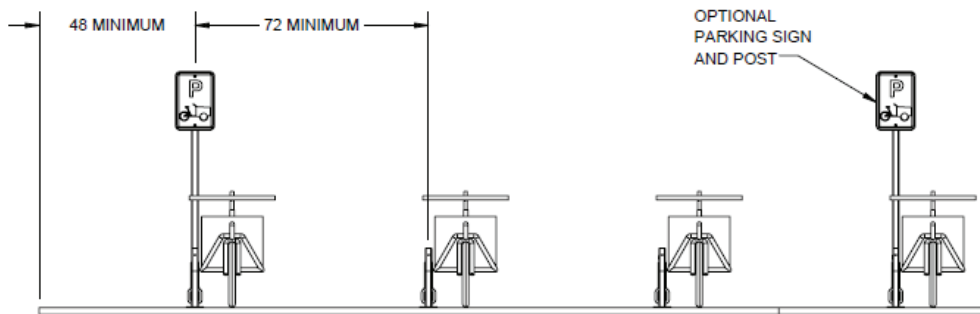
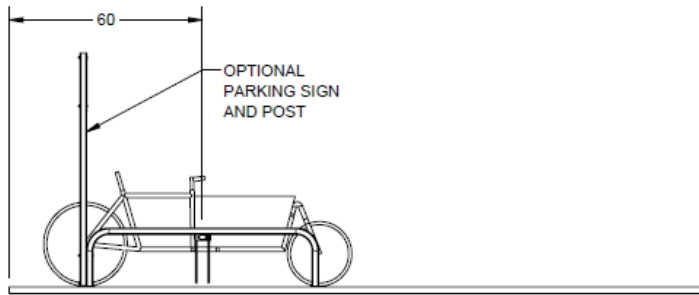
Don't give the cargo bikers the cold shoulder. Designed specifically for long-tails, Bakfiets (Dutch-style), or cargo trikes, our cargo bike rack gives them the space and security they deserve. 2-inch square tubing with an articulating lock bracket allows standard "U" and cable locks to reach the locking points of the bike. We discriminate against bike thieves, not bikes.

Product Specifications

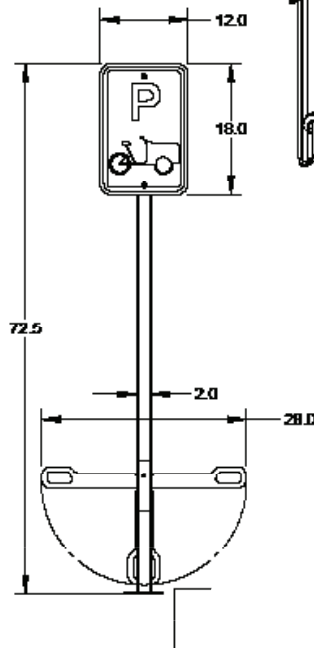
- 2"x2"x3/16" structural square tube – square tubing resists efforts from thieves using pipe cutters
- Locking bracket hinges into multiple positions depending on bike's offset to enable use of standard "U" or cable lock
- Accommodates two bikes
- Additional signage available to designate cargo parking location

Cargo Bike Dock

Recommended Setbacks



2X 5.25"X3.00" FLANGE
2 HOLES SIZED FOR Ø3/8" HARDWARE



2 bikes



2" Square,
7 Gauge



Powder Coat
Galvanized



Temporary: 6264
(install kit: 25683)
Temporary
Secure: 6260
(install kit: 26268)
Permanent: 6265



1 year
warranty



Made in
the USA

Anchors must be purchased separately



Standard Colors



Flange Mount

Dimensions

Model #	# Bikes	Type of Mount	Weight	Length	Width	Height
28356	2	Flange	46 lbs.	73"	5.25"	18.25"

Downloadable product resources available online:



CAD Files



SketchUp Files



Written Specs



Photos

Our Saris Infrastructure representatives can assist with custom layout and spacing to meet your room dimensions and desired bike capacity.

Saris Infrastructure 800.783.7257

www.sarisinfrastructure.com

CIRCLE DOCK



SARIS
INFRASTRUCTURE



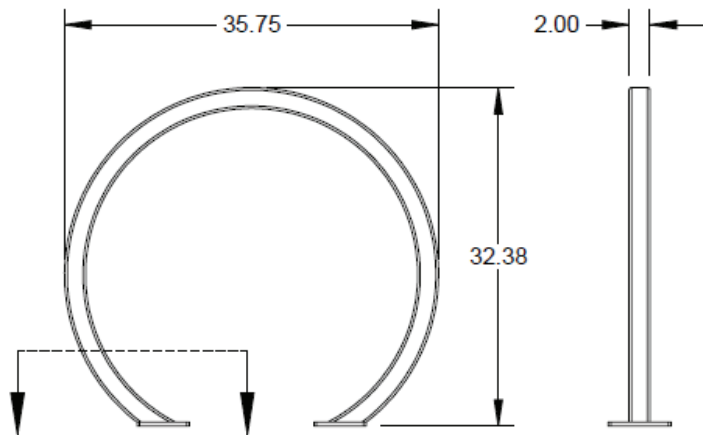
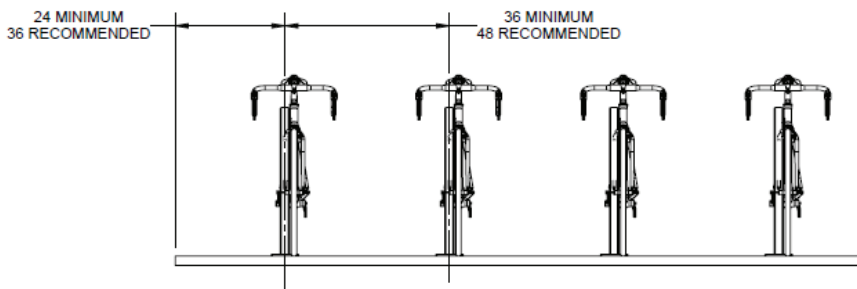
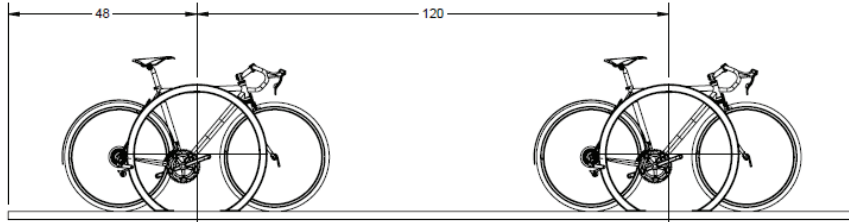
Combining an aesthetic arc with the security of 2-inch square tubing, the Circle dock will help deter the bike thief with a pipe-cutter while looking good at the same time. Also meets APBP standards for bike parking. Beauty and Braun in a bike rack.

Product Specifications

- 2"x2"x 3/16" structural square tube – square tubing resists efforts from thieves using pipe cutters
- Accommodates two bikes
- Offers 2 points of contact for bike stability
- Meets APBP bike parking guidelines

Circle Dock

Recommended Setbacks



2 bikes



2" Square



Powder Coat
Galvanized



Temporary: 6264
(install kit: 25683)
Temporary
Secure: 6260
(install kit: 26268)
Permanent: 6265



1 year
warranty



Made in
the USA

Anchors must be purchased separately



Standard Colors



Flange Mount

Dimensions

Model #	# Bikes	Type of Mount	Weight	Length	Height	Width
28384	2	Flange	38 lbs.	32.375"	35.75"	6"

Downloadable product resources available online:



CAD Files



SketchUp Files



Written Specs



Photos

Our Saris Infrastructure representatives can assist with custom layout and spacing to meet your room dimensions and desired bike capacity.

Saris Infrastructure 800.783.7257

www.sarisinfrastructure.com

CUSTOM-BRANDED CIRCLE DOCK



SARIS
INFRASTRUCTURE



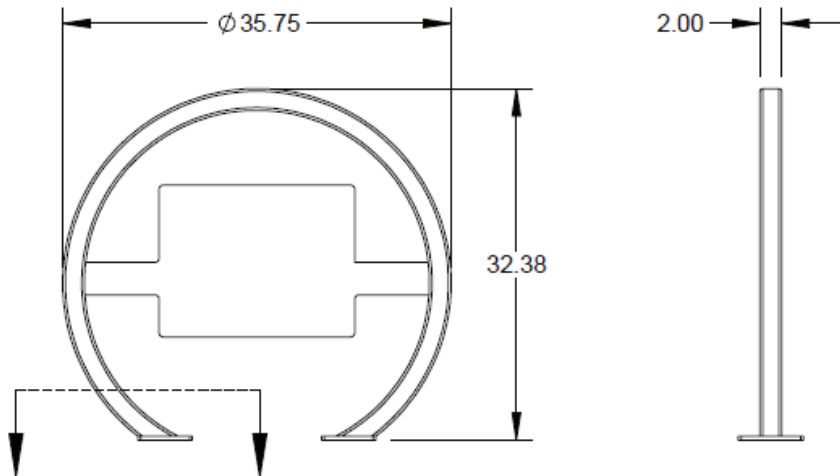
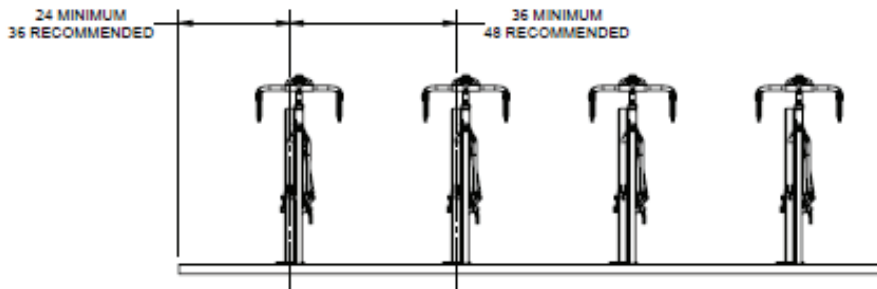
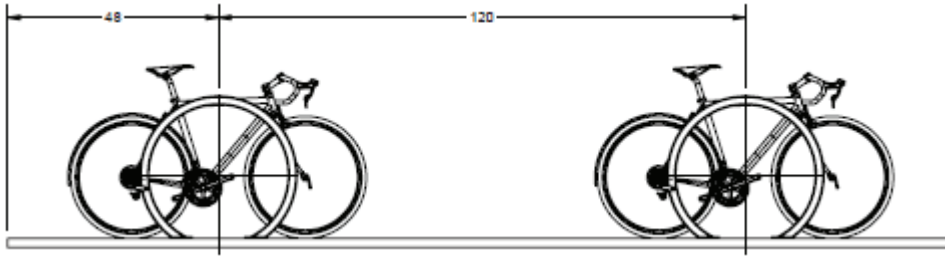
Combining an aesthetic arc with the security of 2-inch square tubing, the Circle dock will help deter the bike thief with a pipe-cutter while looking good at the same time. Also meets APBP standards for bike parking. Beauty and Braun in a bike rack.

Product Specifications

- 2"x2"x3/16" structural square tube – square tubing resists efforts from thieves using pipe cutters
- Accommodates two bikes
- Offers 2 points of contact for bike stability
- Meets APBP bike parking guidelines

CUSTOM-BRANDED Circle Dock

Recommended Setbacks



2 bikes



2" Square



Powder Coat



Temporary: 6264
(install kit: 25683)
Temporary
Secure: 6260
(install kit: 26268)
Permanent: 6265



1 year
warranty



Made in
the USA

Anchors must be purchased separately



Standard Colors



Flange Mount

Dimensions

Model #	# Bikes	Type of Mount	Weight	Length	Height	Width
28373	2	Flange	53 lbs.	32.375"	35.75"	6"

Our Saris Infrastructure representatives can assist with custom layout and spacing to meet your room dimensions and desired bike capacity.

Saris Infrastructure 800.783.7257

www.sarisinfrastructure.com

Downloadable product resources available online:



CAD Files



SketchUp Files



Written Specs



Photos

HOOP SIGN



SARIS
INFRASTRUCTURE



Sky's the limit on how to use this bike parking rack to communicate and reinforce your brand. Custom designed plate added to standard bike dock makes a big statement in a cost effective manner. Create a permanent billboard that advertises your bike-friendliness.

Product Specifications

- 2.375", schedule 40 pipe
- Brushed finish
- Accommodates two bikes
- Offers 2 points of contact for bike stability
- Meets APBP bike parking guidelines

Hoop Sign

Signage Area (W x H)
22" x 20"
55.9cm X 50.8cm"



Example



2 bikes



2.375" Schedule
40 pipe



Powder Coat
Galvanized



Temporary: 6264
(install kit: 25683)
Temporary
Secure: 6260
(install kit: 26268)
Permanent: 6265



1 year
warranty

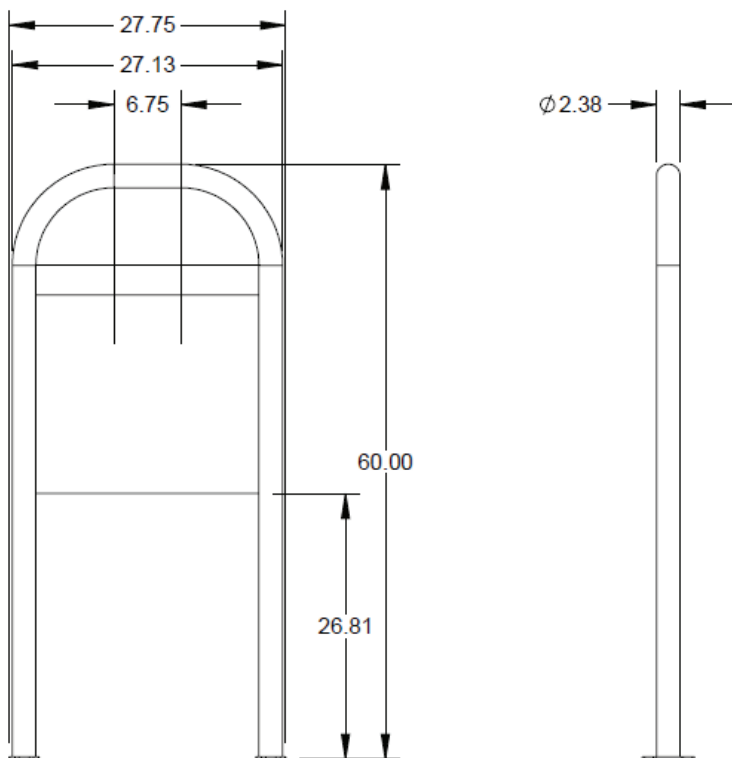


Made in
the USA

Anchors must be purchased separately



Standard Colors



Dimensions

Model #	# Bikes	Type of Mount	Weight	Length	Width	Height
27874	2	Flange	56 lbs.	5.25"	27.75"	60"

Our Saris Infrastructure representatives can assist with custom layout and spacing to meet your room dimensions and desired bike capacity.

Saris Infrastructure 800.783.7257

www.sarisinfrastructure.com

Downloadable product resources available online:



CAD Files



SketchUp Files



Written Specs



Photos

POST & RING



SARIS
INFRASTRUCTURE



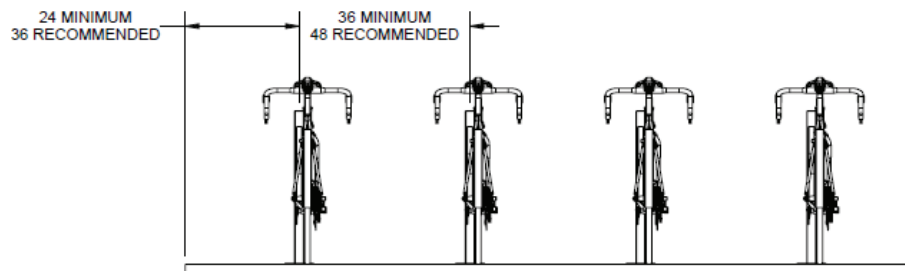
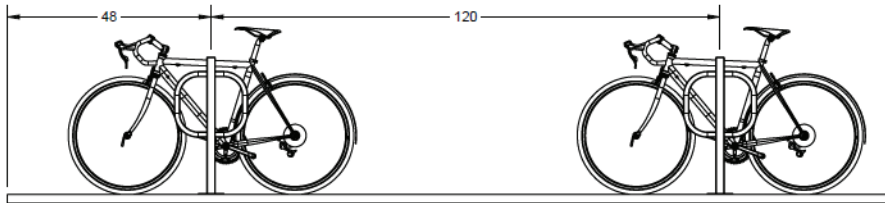
The Post and Ring rack provides a modern look for bike parking with a small foot print and only one installation point. With its square tubing, the Post and Ring is the perfect blend of high security and easy installation.

Product Specifications

- One point of installation and small footprint on the sidewalk
- Full square tube construction
- Accommodates two bikes
- Meets APBP bike parking guidelines

Post & Ring

Recommended Setbacks



2 bikes



2" Square
1.25"



Powder Coat
Galvanized



Temporary: 6264
(install kit: 25683)
Temporary
Secure: 6260
(install kit: 26268)
Permanent: 6265



1 year
warranty



Made in
the USA

Anchors must be purchased separately



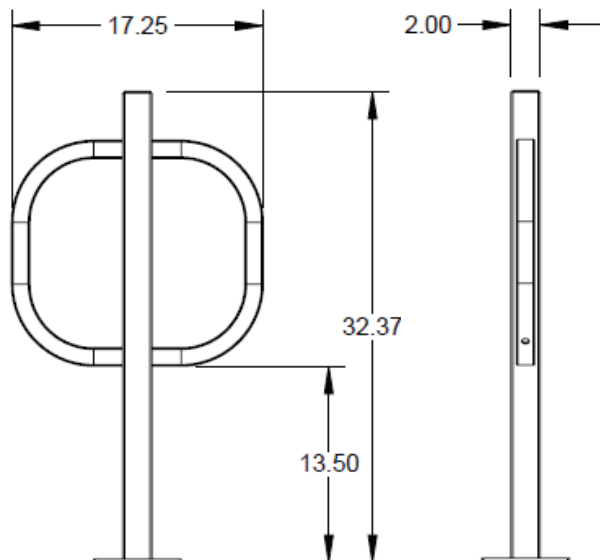
Standard Colors



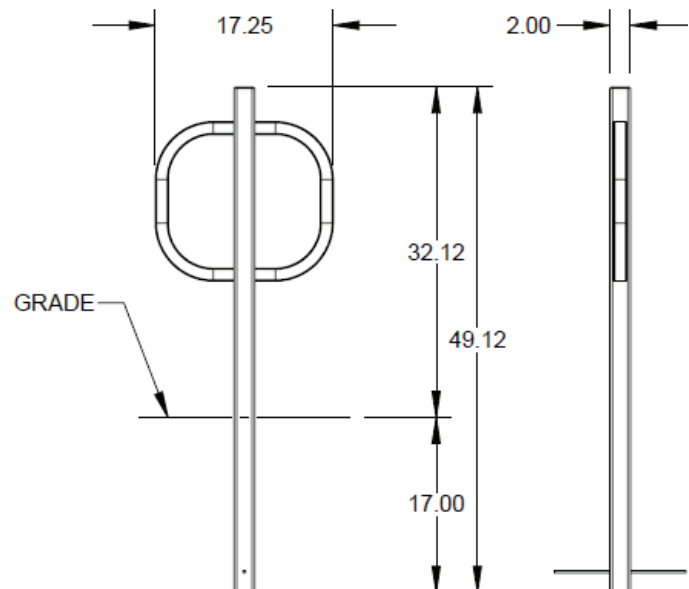
Flange Mount



Below Grade
Mount



27927 Shown



27968 Shown

Dimensions

Model #	# Bikes	Type of Mount	Weight	Length	Height	Width
27927	2	Flange	22 lbs.	32.37"	17.25"	6"
27968	2	Below Grade	26 lbs.	49.12"	17.25"	2"

Our Saris Infrastructure representatives can assist with custom layout and spacing to meet your room dimensions and desired bike capacity.

Saris Infrastructure 800.783.7257

www.sarisinfrastructure.com

Downloadable product resources available online:



CAD Files



SketchUp Files



Written Specs



Photos

CUSTOM-BRANDED POST & RING



SARIS
INFRASTRUCTURE



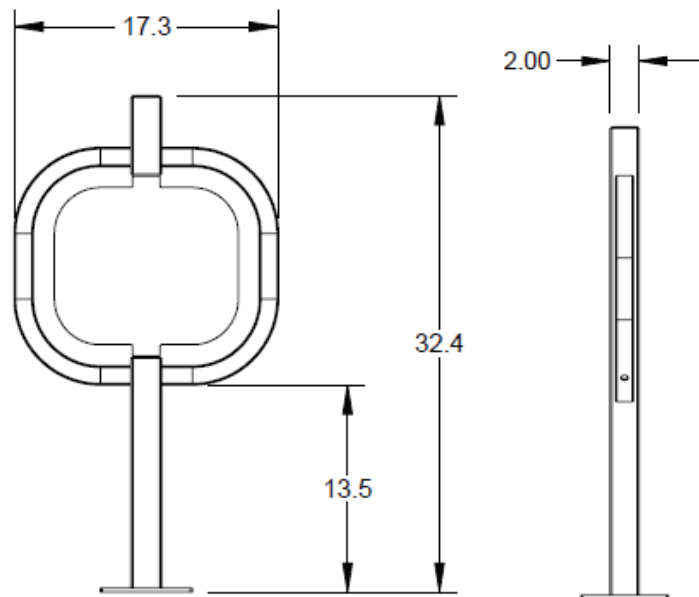
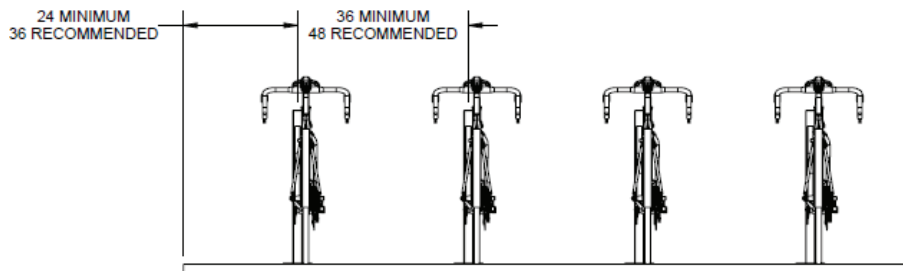
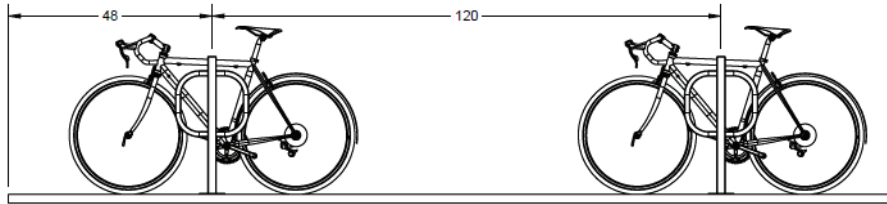
The full square tube construction of the Post and Ring offers a higher degree of security against pipe cutters than standard round tubing. Pair it with your custom design or logo and you've got the perfect marriage of bike rack form and function.

Product Specifications

- One point of installation and small footprint on the sidewalk
- Full square tube construction
- Accommodates two bikes
- Offers 2 points of contact for bike stability
- Meets APBP bike parking guidelines

CUSTOM-BRANDED Post & Ring

Recommended Setbacks



27923 Shown



2 bikes



2" Square
1.25"



Powder Coat



Temporary: 6264
(install kit: 25683)
Temporary
Secure: 6260
(install kit: 26268)
Permanent: 6265



1 year
warranty



Made in
the USA

Anchors must be purchased separately



Standard Colors



Flange Mount

Dimensions

Model #	# Bikes	Type of Mount	Weight	Length	Height	Width
27923	2	Flange	24 lbs.	32.37"	17.25"	6"
27972	2	Below Grade	28 lbs.	49.12"	17.25"	2"

Our Saris Infrastructure representatives can assist with custom layout and spacing to meet your room dimensions and desired bike capacity.

Saris Infrastructure 800.783.7257

www.sarisinfrastructure.com

Downloadable product resources available online:



CAD Files



SketchUp Files



Written Specs



Photos

BIKE TRAC



SARIS
INFRASTRUCTURE



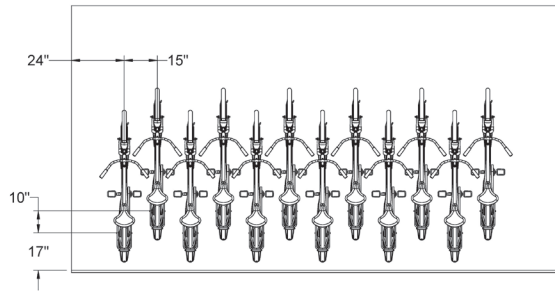
The Bike Trac provide full bike coverage to protect the walls, while also providing freedom for capacity and mounting configuration. Available in locking (2 systems to choose from) and non-locking options.

Product Specifications

- Wide wheel track accepts all bikes
- Full length tray keeps bike in place and protects wall surface
- Two locking mechanism options available

Bike Trac

Recommended Setbacks



1 bike
per trac



84" minimum
ceiling height



Powder Coat
(Black Only)



Recommended
anchor: #6264
For concrete
walls
All other surfaces
contact local
hardware store



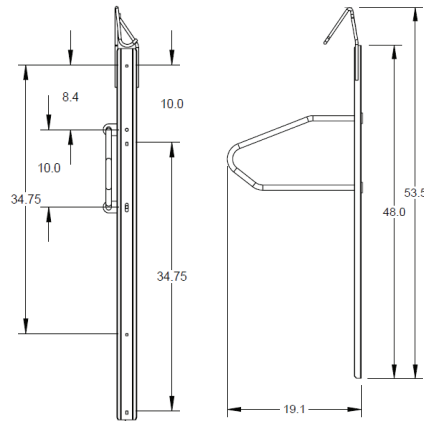
1 year
warranty



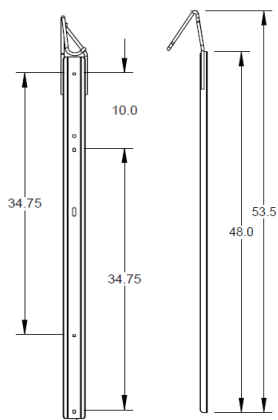
Made in
the USA

Anchors must be purchased separately

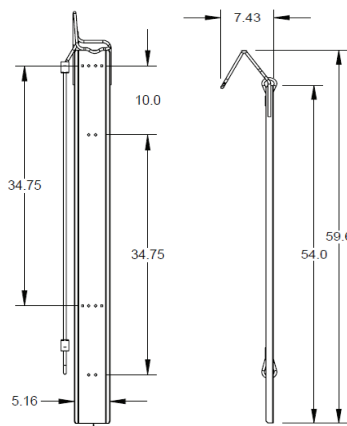
6006 Shown



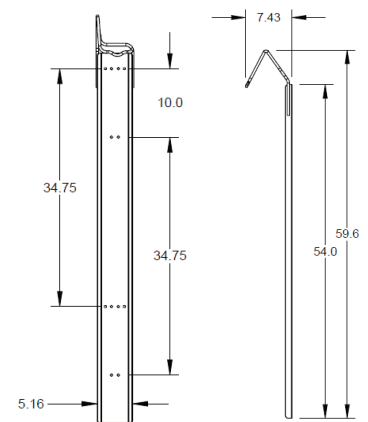
6003T Shown



6003FC Shown



6003F Shown



Dimensions

Model #	Description	Weight	Length	Width	Space Requirement
6006	Locking	16.7 lbs.	53.5"	4.9"	71" x 45"
6003C	Locking	8 lbs.	53.5"	2.9"	71" x 45"
6003T	Non-Locking	6 lbs.	53.4"	2.9"	71" x 45"
6003F	Non-Locking	8 lbs.	59.6"	5.2"	71" x 45"
6003FC	Locking	13 lbs.	59.6"	5.2"	71" x 45"

Our Saris Infrastructure representatives can assist with custom layout and spacing to meet your room dimensions and desired bike capacity.

Saris Infrastructure 800.783.7257

www.sarisinfrastructure.com

Downloadable product resources available online:



CAD Files



SketchUp Files



Written Specs



Photos

STACK RACK



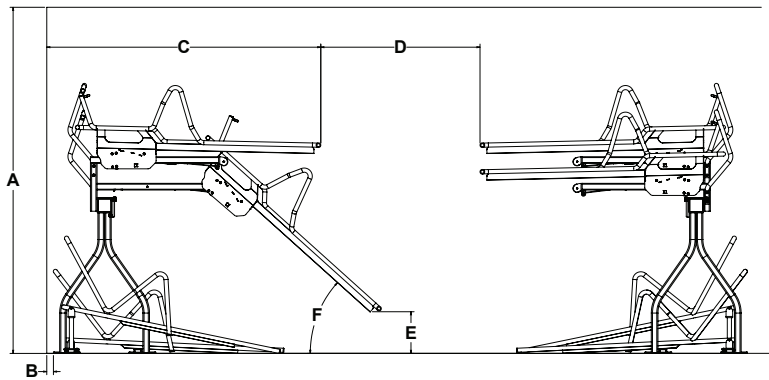
The customizable Stack Rack combines industrial design and strength with two-tier spacing for added capacity and maximum density. And, the lift assist mechanism eases any bike lifting required by the user, making it easier to load and unload. Flexibility in bike spacing, rack configuration and the modular design make this product unique to each installation.

Product Specifications

- Can be built as single-sided or double-sided unit.
- Multiple bike spacing options offers flexibility to meet municipal bike parking regulations
- Few moving parts to minimize maintenance
- 1.25" security locking bar standard at each bike spot
- 104" ceiling clearance (lower ceiling height model can be provided if needed for ceiling height of 96" – 24" bike spacing only).
- Minimal 12" bicycle lift height for accessing upper trays.

Stack Rack

Recommended Setbacks



16 bike maximum per section.
Can be designed in sections of 4, 6, 8, 10, 12, 16 bikes



6" square upper frame
2" square steel lower frame



Hot Dipped Galvanized



Flange Mount Recommended Anchor #6260



Lift assist mechanism is spring loaded top tray

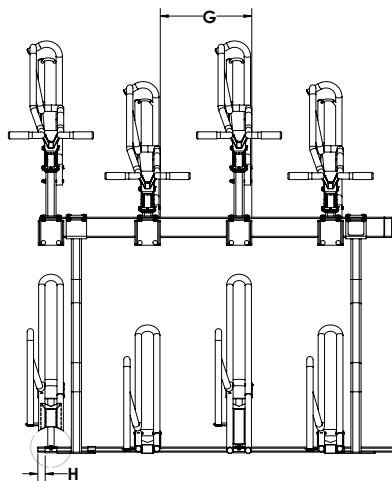


1 year warranty



Made in the USA

Anchors must be purchased separately



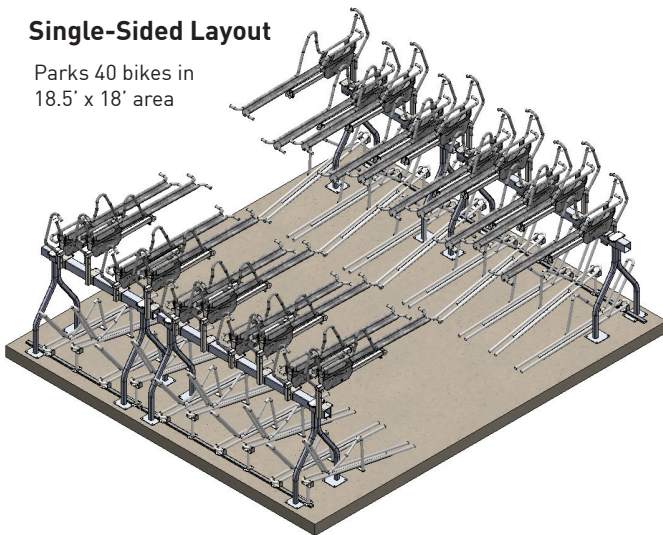
A	B	C	D	E	F	G	H
104" (or 96" @ 24" bike spacing ('G'))	2"	80.5"	48" min	12" lower, 20" upper	42°	17", 18" or 24"	1.47"

Dimensions

# Bikes	Starting Dim. (A)	Bike Spacing (B)	Overall Length (C)
16	14"	18"	154"
16	14"	20"	168"
16	14"	24"	196"

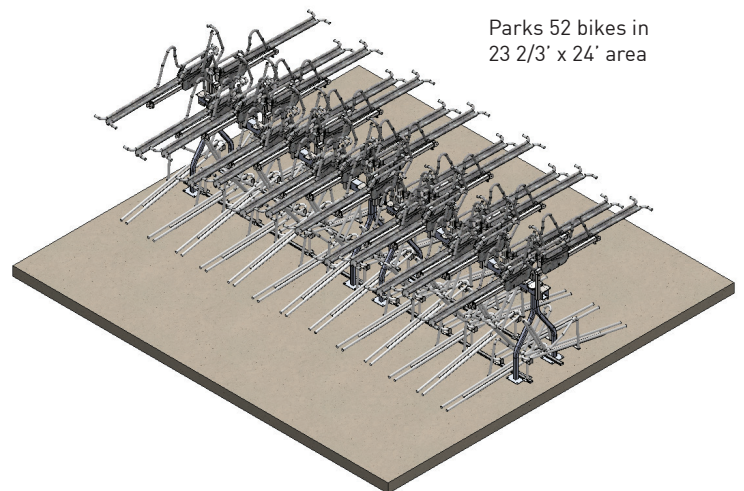
Single-Sided Layout

Parks 40 bikes in 18.5' x 18' area



Double-Sided Layout

Parks 52 bikes in 23 2/3' x 24' area



Our Saris Infrastructure representatives can assist with custom layout and spacing to meet your room dimensions and desired bike capacity.

Saris Infrastructure 800.783.7257

www.sarisinfrastructure.com

Downloadable product resources available online:



CAD Files



SketchUp Files



Written Specs



Photos

STRETCH RACK



SARIS
INFRASTRUCTURE



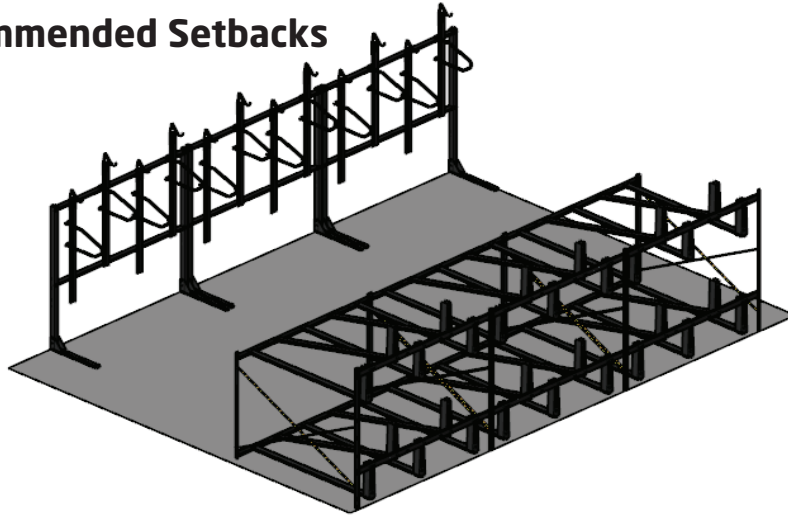
The stretch rack provides the most dense bike parking solution. The two tier design minimizes footprint, and the space saving vertical stagger further maximizes bike density. Available in locking and non-locking options, the stretch rack is a versatile, modular indoor solution for long term parking needs.

Product Specifications

- Modular construction allows for easy expansion, side by side or back to back
- Staggered bike position saves space and eases clearance between bikes
- Can be combined with vertical racks for full bike room layout
- Does not require anchoring (wall or floor)
- Bolt together design

Stretch Rack

Recommended Setbacks



6, 8 or 10 bikes



11 guage steel frame



Powder Coat (black only)



Freestanding Unit



8 ft ceiling clearance required

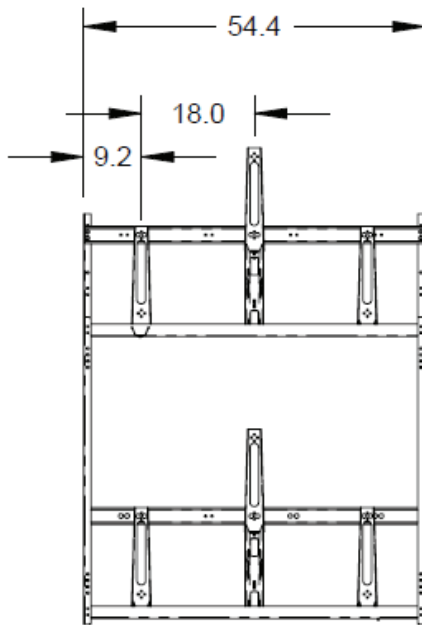


1 year warranty

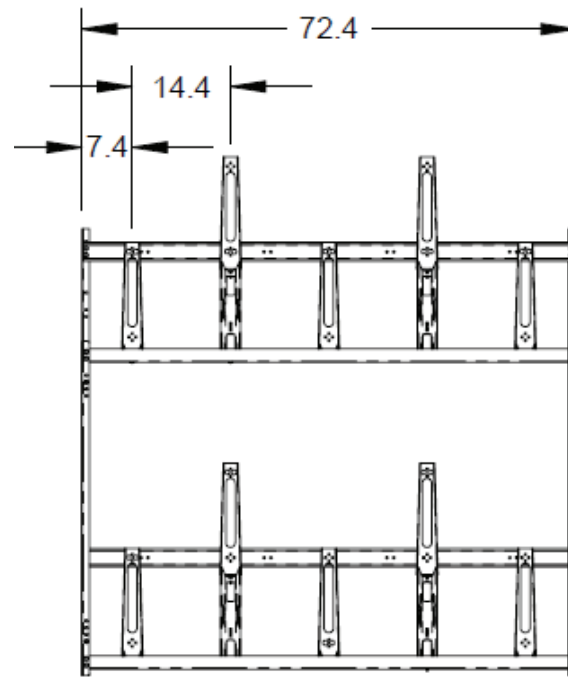


Made in the USA

Anchors must be purchased separately



8016 Shown



8010 Shown

Dimensions

Model #	# Bikes	Bike Spcaing	Ceiling Height Min.	Foot Print
Non-Locking				
8016	6	18"	96"	54" x 63"
8018	8	13.5"	96"	54" x 63"
8080	8	18"	96"	72" x 63"
8010	10	14.4"	96"	72" x 63"
Locking				
8116	6	18"	96"	54" x 63"
8118	8	13.5"	96"	54" x 63"
8180	8	18"	96"	72" x 63"
8110	10	14.4"	96"	72" x 63"

Our Saris Infrastructure representatives can assist with custom layout and spacing to meet your room dimensions and desired bike capacity.

Saris Infrastructure 800.783.7257

www.sarisinfrastructure.com

Downloadable product resources available online:



CAD Files



SketchUp Files



Written Specs



Photos

VERTICAL RACKS



SARIS
INFRASTRUCTURE



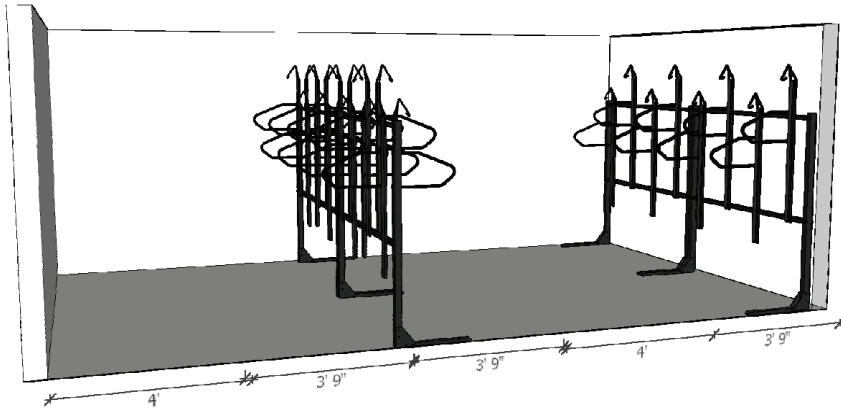
When floor space is at a premium, the vertical rack uses wall space to efficiently park bikes. The vertical system can be mounted into the floor or wall (perfect for a space where mounting into the wall isn't an option), uses a vertical stagger to minimize between bike spacing, and can be modular to create larger scale parking areas.

Product Specifications

- Smallest footprint for indoor parking product
- Versatile configurations
- Locking and non-locking versions available
- Staggered design minimizes handlebar interference
- Perfect for areas where wall mounting is not an option
- Expandable with one bike add-on (6003T, 6003C, 6003F, 6003FC, 6006)

Vertical Racks

Recommended Setbacks



3, 4, 6 or 8 bikes



TGIC Black Powder Coat



Powder Coat (black only)



Floor or wall mounting options
Recommended anchor: #6264



80" minimum ceiling height

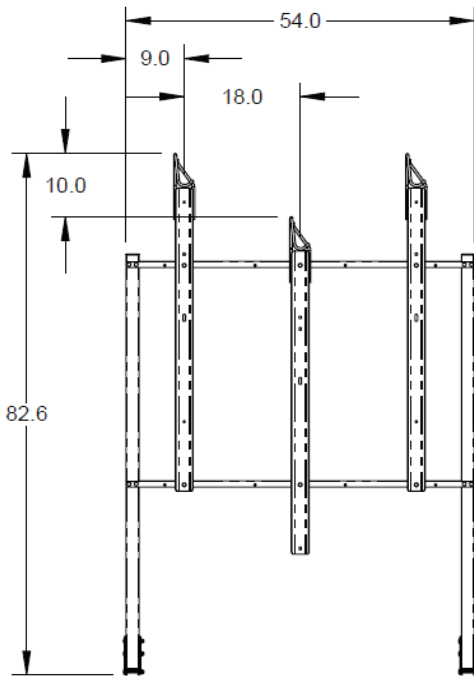


1 year warranty

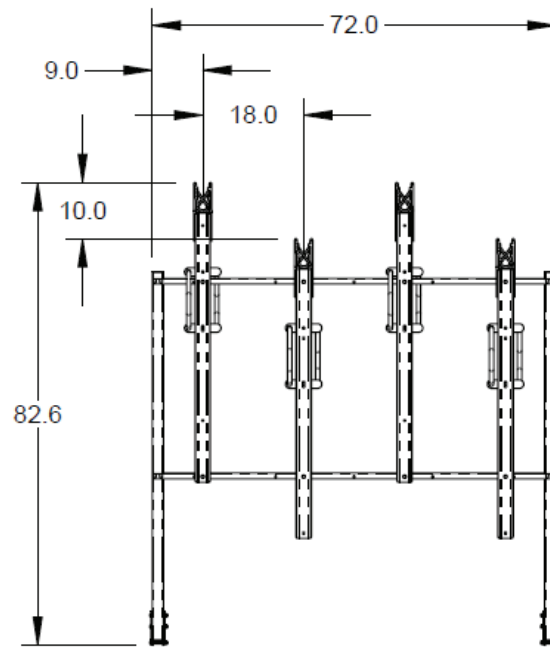


Made in the USA

Anchors must be purchased separately



8023 Shown



8044 Shown

Dimensions

Model #	# Bikes	Bike Spacing	Ceiling Height Min.	Foot Print
Non-Locking				
8023	3	18"	84"	54" x 46"
8024	4	18"	84"	75" x 46"
8033	6	18"	84"	54" x 90"
8034	8	18"	84"	75" x 90"
Locking				
8043	3	18"	84"	54" x 46"
8044	4	18"	84"	75" x 46"
8063	6	18"	84"	54" x 90"
8064	8	18"	84"	75" x 90"

Our Saris Infrastructure representatives can assist with custom layout and spacing to meet your room dimensions and desired bike capacity.

Saris Infrastructure 800.783.7257

www.sarisinfrastructure.com

Downloadable product resources available online:



CAD Files



SketchUp Files



Written Specs



Photos

MODULAR CORRAL



SARIS
INFRASTRUCTURE



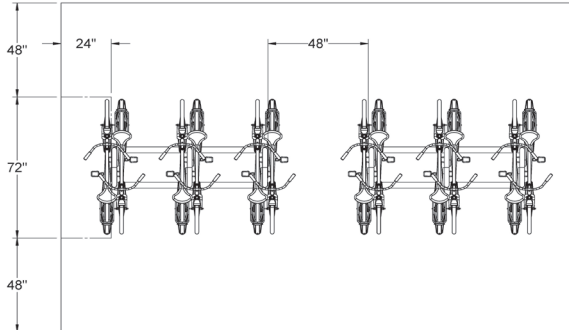
The Modular Corral rack combines the intuitive ease of bike docks, with the benefit of reduced installation from a multi-space bike rack. Modular in nature, this bike rack can be connected and expanded to fit the given installation area. The Modular Corral Rack can also be angled to create additional space and convenience. Available in different tube widths, dimensions and custom branding to find the perfect fit for your bike parking project.

Product Specifications

- Easy access for maintenance and street cleaning
- Only 4 anchor points for installation
- Modular design to easily assemble or adjust angle of hoops
- Durable powder coat finish is corrosion resistant and has long term life span
- Meets APBP bike parking standards
- Customization and branding options available

Modular Corral

Recommended Setbacks



4, 6, 8, 10 or
12 bikes



1.66"
2" Square
2.375"



Powder Coat
Galvanized



Permanent: 6259



1 year
warranty

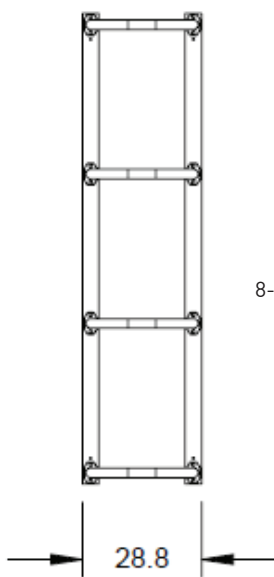


Made in
the USA

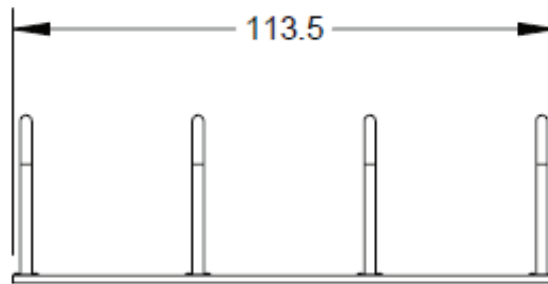
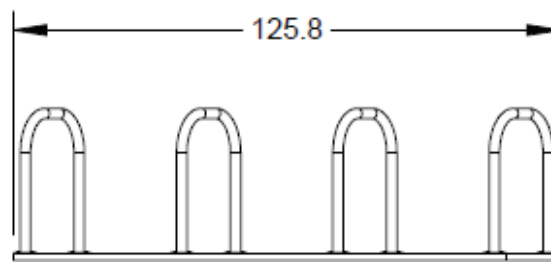
Anchors must be purchased separately



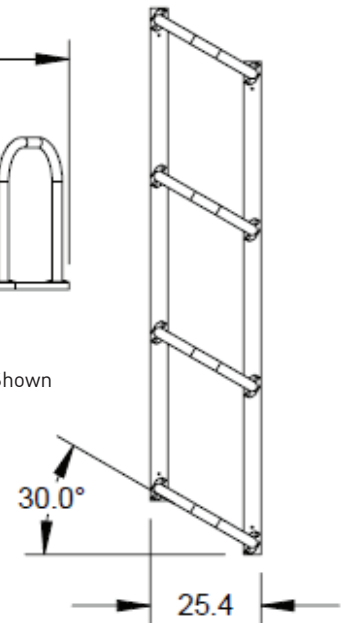
Standard Colors



8-bike Shown



8-bike Angeled Shown



# Bikes	Length Straight	Length Angled	Width Straight	Width Angled	Height
1.66", 2.375", 2" sq					
4	41.45"	53.8"	28.8"	25.4"	35"
6	77.45"	89.8"	28.8"	25.4"	35"
8	113.45"	125.8"	28.8"	25.4"	35"
10	149.5"	161"	28.8"	25.4"	35"
12	185.5"	197.8"	28.8"	25.4"	35"

Our Saris Infrastructure representatives can assist with custom layout and spacing to meet your room dimensions and desired bike capacity.

Saris Infrastructure 800.783.7257

www.sarisinfrastructure.com

Downloadable product resources available online:



CAD Files



SketchUp Files



Written Specs



Photos

CITY RACK



SARIS
INFRASTRUCTURE



The City Rack provides higher density outdoor bike parking for a more organized, and space efficient approach to bike parking. Superior security due to full square tube construction and one piece square tube main frame. The City Rack coordinates with our Post & Ring to create options for a cohesive look and feel of the street-scape.

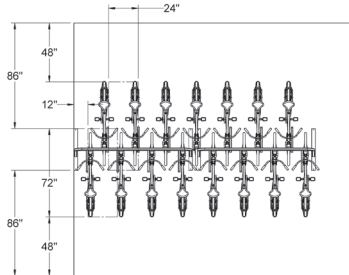
Product Specifications

- Single and double sided options available
- High security, full square tube construction
- Easy access for maintenance and street cleaning
- Two points of contact between bike frame and wheel
- Modern look; coordinates with Post & Ring

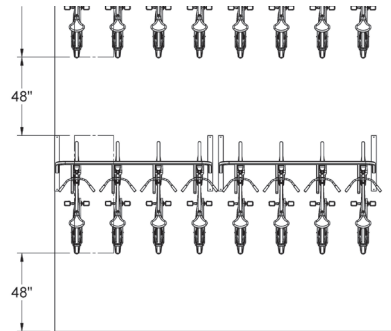
City Rack

Recommended Setbacks

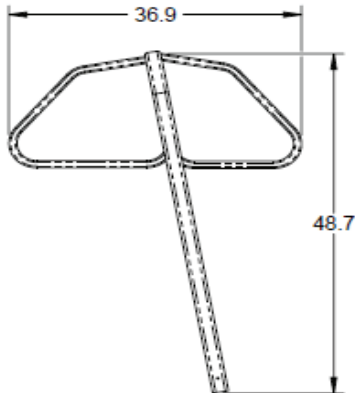
Double Sided Layout



Single Sided Layout

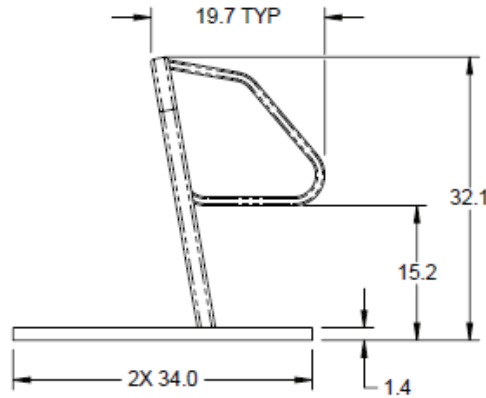


Below Grade Mount



2432 Shown

Free Standing



2403 Shown



3-11 bikes



2", 7 gauge square
tube main frame
1.5" x 1", 11 gauge
square tube hangers



Powder Coat
Galvanized



Can be freestanding
or use recommended
anchor: #6259 for
concrete installation
#6267 for asphalt
installation



1 year
warranty



Made in
the USA

Anchors must be purchased separately



Standard Colors

Dimensions

Model #	# Bikes	Type of Mount	Weight	Length	Width	Height	Space Requirement
2402	3 (single side)	Below Grade	96 lbs.	70.5"	20"	48.8"	86" x 83"
2403	3 (single side)	Free Standing	102 lbs.	71"	34"	31.7"	86" x 83"
2405	4 (single side)	Below Grade	116 lbs.	95.5"	20"	48.8"	86" x 108"
2406	4 (single side)	Free Standing	122 lbs.	96"	34"	31.7"	86" x 108"
2408	5 (single side)	Below Grade	135 lbs.	120.5"	20"	48.8"	86" x 133"
2409	5 (single side)	Free Standing	140 lbs.	121"	34"	31.7"	86" x 133"
2411	6 (single side)	Below Grade	154 lbs.	145.5"	20"	48.8"	86" x 158"
2412	6 (single side)	Free Standing	160 lbs.	146"	34"	31.7"	86" x 158"
2432	5 (double side)	Below Grade	113 lbs.	70.5"	36.9"	48.8"	120" x 83"
2433	5 (double side)	Free Standing	118 lbs.	71"	36.9"	31.7"	120" x 83"
2435	7 (double side)	Below Grade	140 lbs.	95.5"	36.9"	48.8"	120" x 108"
2436	7 (double side)	Free Standing	145 lbs.	96"	36.9"	31.7"	120" x 108"
2438	9 (double side)	Below Grade	167 lbs.	120.5"	36.9"	48.8"	120" x 133"
2439	9 (double side)	Free Standing	173 lbs.	121"	36.9"	31.7"	120" x 133"
2441	11 (double side)	Below Grade	194 lbs.	145.5"	36.9"	38.8"	120" x 158"
2442	11 (double side)	Free Standing	200 lbs.	146"	36.9"	31.7"	120" x 158"

Our Saris Infrastructure representatives can assist with custom layout and spacing to meet your room dimensions and desired bike capacity.

Saris Infrastructure 800.783.7257

www.sarisinfrastructure.com

Downloadable product resources available online:



CAD Files



SketchUp Files



Written Specs



Photos

GRID RACK



SARIS
INFRASTRUCTURE



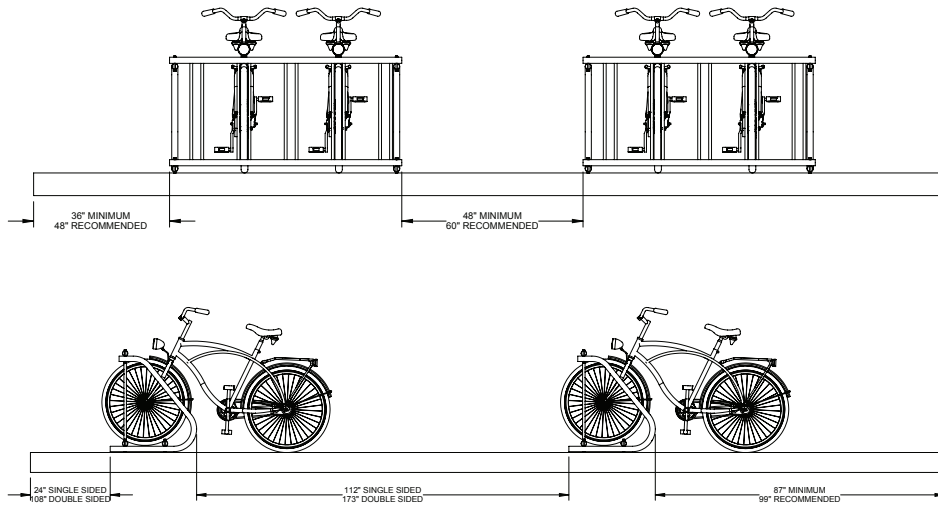
The grid rack is a great option for short term bike storage, and easily accommodates smaller bikes in school settings. The Saris grid racks provide options to meet user requirements and budget variation.

Product Specifications

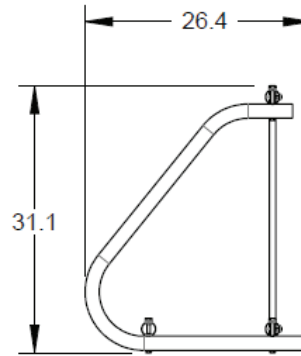
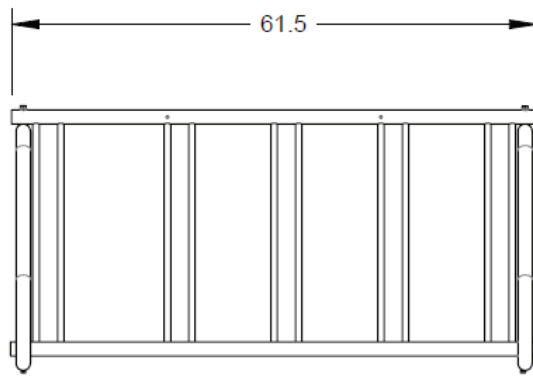
- Easy to move for maintenance
- Free standing for flexibility in space required

Grid Rack

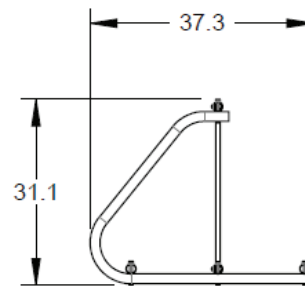
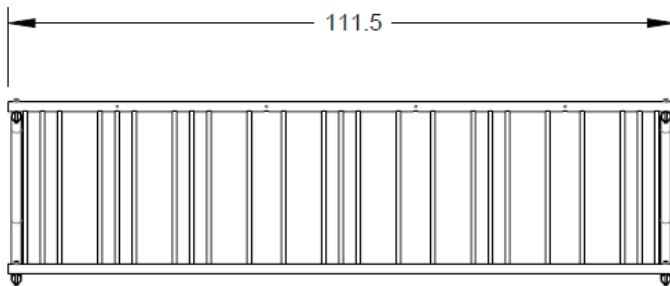
Recommended Setbacks



6407 Shown



6401 Shown



5, 9, 10 and
18 bikes



6400- Riveted
Main Frame



G90
pre-galvanized



If desired, recommend
anchor Spike
Anchor #6259, Earth
Installation #6258,
Cement Installation
#6257



1 year
warranty



Made in
the USA

Anchors must be purchased separately

Dimensions

Model #	# Bikes	Type of Mount	Weight	Length	Width	Height	Space Requirement
6401	18 (9 each side)	Double Sided	91 lbs.	111"	38"	31"	120" x 127"
6403	9	Single Sided	69 lbs.	111"	26"	31"	120" x 72"
6405	10 (5 each side)	Double Sided	59 lbs.	62"	38"	31"	71" x 127"
6407	5	Single Sided	41 lbs.	62"	26"	31"	71" x 72"

Downloadable product resources available online:



CAD Files



SketchUp Files



Written Specs



Photos

Our Saris Infrastructure representatives can assist with custom layout and spacing to meet your room dimensions and desired bike capacity.

Saris Infrastructure 800.783.7257

www.sarisinfrastructure.com

WAVE RACK



SARIS
INFRASTRUCTURE



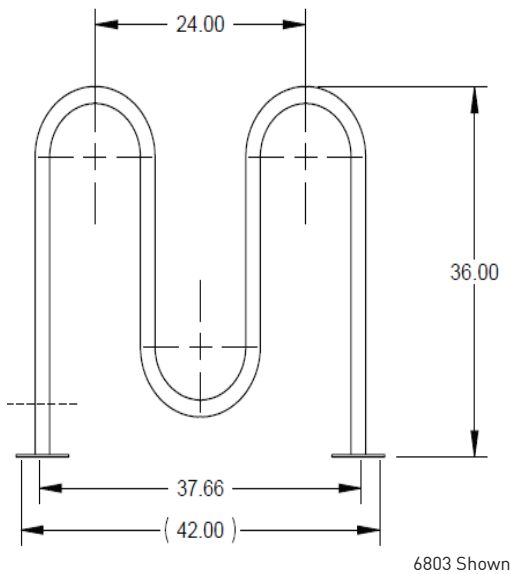
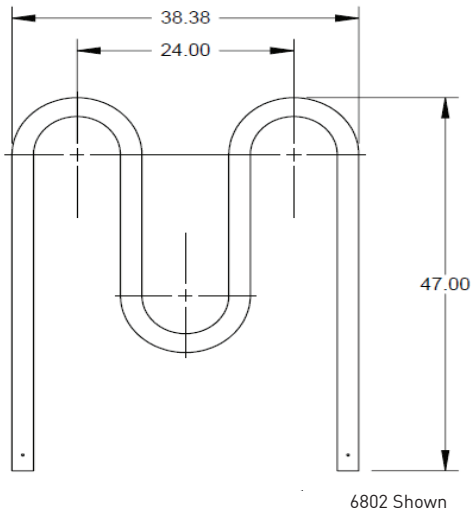
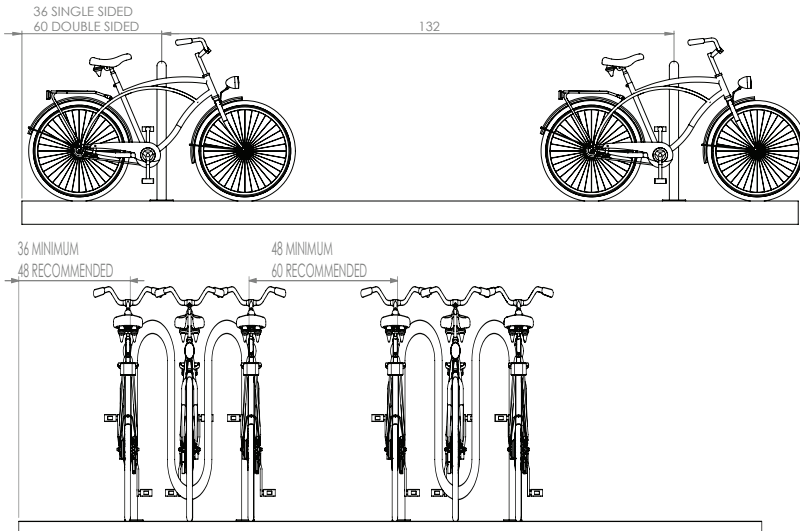
The stadium rack combines the intuitive ease of bike docks, with the benefit of reduced installation from a multi-space rack. Modular in nature, the stadium racks can be connected and expanded to fit the given installation area. The stadium racks meets APBP guidelines for u-lock compatibility, bike spacing and providing two points of support for the bike.

Product Specifications

- All steel tube in variety of sizes and shape
- 1.66" electrowelded steel tubing, 12 gauge
- 2.375" schedule 40 steel pipe, 9 gauge, 9" radius bend
- Spacing configurations provide multiple options to meet demands

Wave Rack

Recommended Setbacks



3-9 bikes



1.66", 12 gauge
2.375", 9 gauge



Powder Coat
Galvanized



Temporary Mount:
#6263
Permanent Mount:
#6260



1 year
warranty



Made in
the USA

Anchors must be purchased separately



Standard Colors



Flange Mount



Below Grade
Mount

Dimensions

Model #	# Bikes	Type of Mount	Weight	Length	Width	Height	Space Requirement
2.375"							
2102	5	Below Grade	57 lbs.	57"	2.4"	36"	87" x 110"
2103	5	Flange	60 lbs.	60"	6"	36"	87" x 110"
2105	7	Below Grade	90 lbs.	93"	2.4"	36"	123" x 110"
2106	7	Flange	95 lbs.	96"	6"	36"	123" x 110"
2108	9	Below Grade	108 lbs.	108"	2.4"	36"	159" x 110"
2109	9	Flange	111 lbs.	111"	6"	36"	159" x 110"
1.66"							
6802	5	Below Grade	26 lbs.	36"	2"	36"	66" x 110"
6803	5	Flange	29 lbs.	40"	6"	36"	66" x 110"
6805	7	Below Grade	38 lbs.	62"	2"	36"	92" x 110"
6806	7	Flange	40 lbs.	66"	6"	36"	92" x 110"
6808	9	Below Grade	54 lbs.	86"	2"	36"	116" x 110"
6809	9	Flange	60 lbs.	90"	6"	36"	116" x 110"

Our Saris Infrastructure representatives can assist with custom layout and spacing to meet your room dimensions and desired bike capacity.

Saris Infrastructure 800.783.7257

www.sarisinfrastructure.com

Downloadable product resources available online:



CAD Files



SketchUp Files



Written Specs



Photos

BICYCLE ACCESS RAMP



SARIS
INFRASTRUCTURE



Provides a safe, efficient, and cost-effective way to provide access for cyclists up or down a stair system.

Product Specifications

- Modular design works with any stair system (rise, run, and length)
- Only one measurement is required to specify the design. No more expensive/time consuming custom design, shop drawings, and on-site fabrication.
- Ramp section designed to work with all types of bikes up to 5" tire width
- Anti-rollout feature ramp shape requires only one hand to hold the bike while it rolls
- Grip tape at the base prevents slipping, bike ramp graphics ensure intuitive use
- Thick wall aluminum ramp extrusion and stainless steel mounting feet will not rust
- Concrete anchors included; other mounting options available

Bicycle Access Ramp

Recommended Setbacks

Set ramp spacing from wall/edge. Place the edge of the ramp assembly 6" from the adjacent wall or edge of stairway.



Concrete anchors included



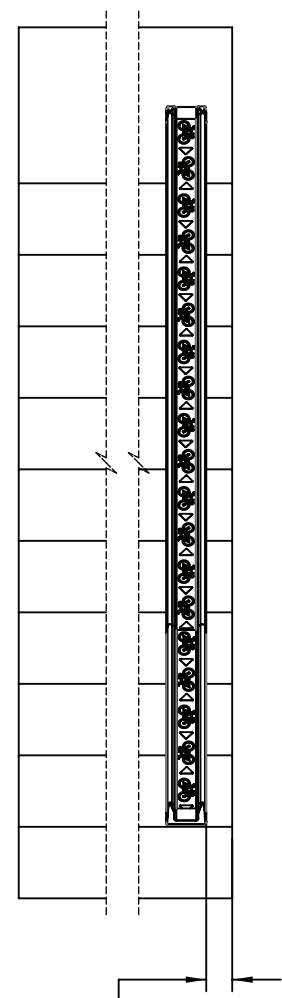
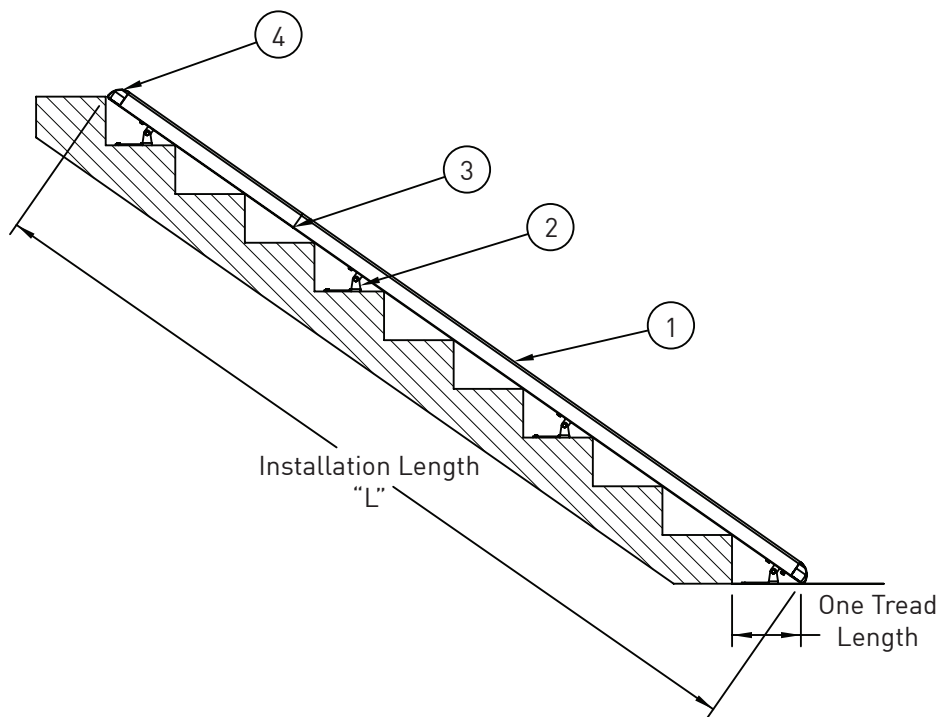
Extruded aluminum runnel, Stainless steel installation hardware



2 year warranty



Made in the USA



Recommended Distance from Wall/Stair Edge: 6"

Modules		
Module #	Part #	Description
1	26808	Ramp, 8'
2	26811	Mounting Bracket
3	26809	Joining Bracket
4	26810	End Cap Set

Modules				
Module Part #				
"L"	26808	26811	26809	26810
4 to 8'	1	3	0	1
8 to 12'	2	4	1	1
12 to 16'	2	5	1	1
16 to 20'	3	6	2	1
20 to 24'	3	7	2	1
24 to 28'	4	8	3	1
28 to 32'	4	9	3	1
Over 32'	Contact Saris Infrastructure			

Our Saris Infrastructure representatives can assist with custom layout and spacing to meet your room dimensions and desired bike capacity.

Saris Infrastructure 800.783.7257

www.sarisinfrastructure.com

Downloadable product resources available online:



CAD Files



SketchUp Files



Written Specs

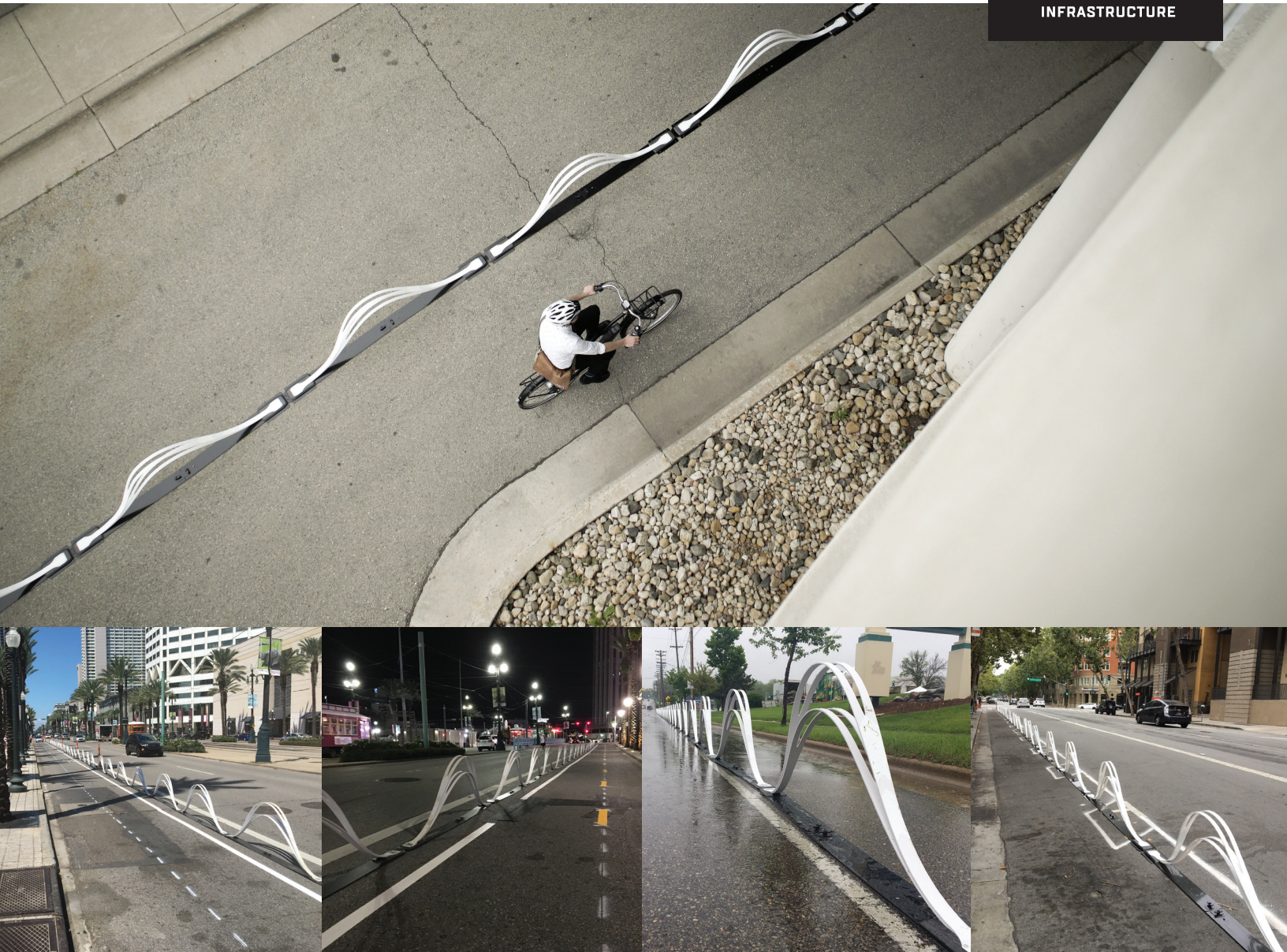


Photos

WAVE DELINEATOR



SARIS
INFRASTRUCTURE



Protected bike lane, cycle track, Green Lane, low-stress bike lane- whatever your preferred nomenclature, cities in the U.S. have been implementing these on public streets at impressive rates. The Wave Delineator is ideal for temporary pop-up bike lanes when communities want to create a demonstration protected lane or direct bike traffic during day or week-long events.

Product Specifications

- Aesthetic: wave design with double cut-out
- Easy Deployment: no tools required
- Transportable: lightweight and collapsible
- Robust: thickness optimized for weight and deflection
- Safe: chamfered edges, reflective decals, ADA compliant, optimized height for drivers and cyclists
- Multiple mounting options: freestanding, temporary, and semi-permanent

Wave Delineator



1 year
warranty



ABS
thermoplastic



Made in
the USA

Can a bike lane feel SAFE and FUN? If so, will it impact the success of a project and increase enjoyment?

In collaboration with Los Angeles DOT and Gensler Architects, Bike Fixation designed a temporary lane delineator that makes pop-up bike lanes fun and inspiring. Standard bollards, flex posts, and traffic cones make bike lanes feel like construction zones and unpleasant places to be.

The goal was to design a barrier that helps make demonstration projects and events more successful, thereby helping build community support for more permanent infrastructure.

Before:

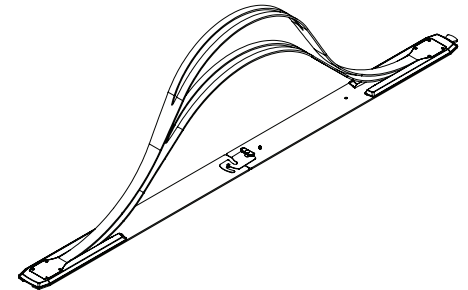
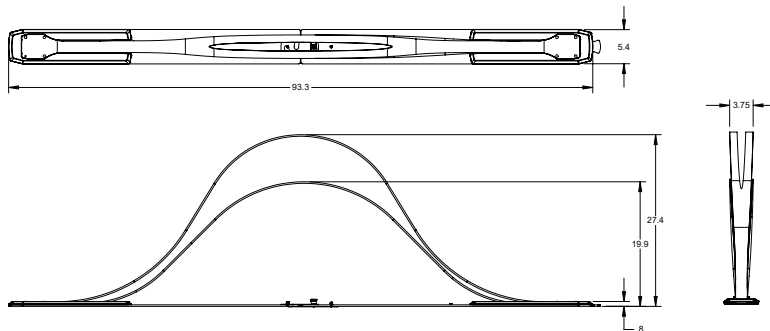


After:

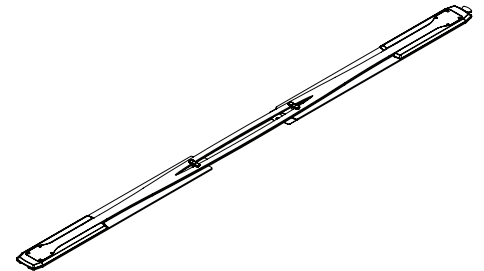
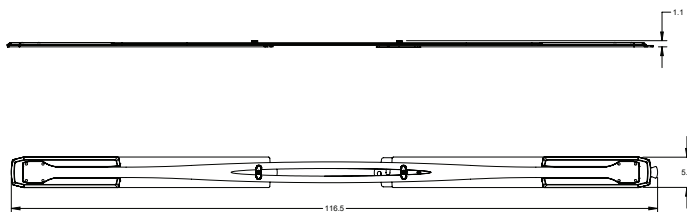


Product Dimensions:

Deployed:



Stored:



Dimensions

Model #	Type of Mount	Weight	Length	Width	Height
8700	Freestanding	11 lbs.	93.3"	111.5"	27.4"

Downloadable product resources available online:



CAD Files



SketchUp Files



Written Specs



Photos

Our Saris Infrastructure representatives can assist with custom layout and spacing to meet your room dimensions and desired bike capacity.

Saris Infrastructure 800.783.7257

www.sarisinfrastructure.com

BIKE WASH STATION



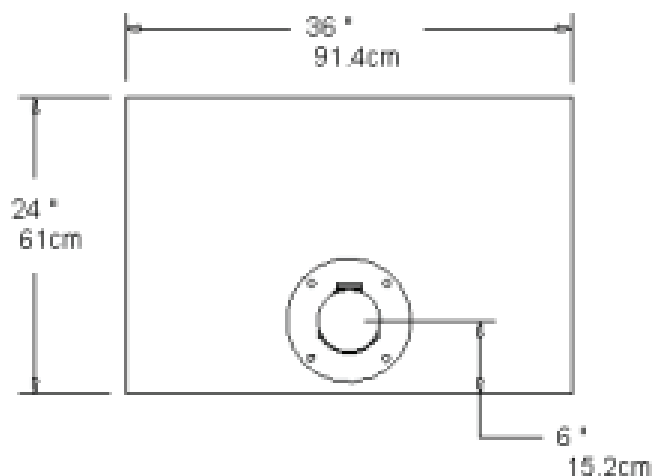
Keep your bike clean and with this innovative, public-use wash station. Perfect for mountain bike trailheads, bike parks and bike rooms in apartment buildings, the wash station is designed to plumb-in just like a drinking fountain.

Product Specifications

- Includes vandal-resistant hose and nozzle with stainless steel fittings
- HVLC (High Velocity Low Consumption) nozzle optimized for strong cleaning power without damaging bicycle bearings while also minimizing water usage
- Vandal-proof auto shut off water valve prevents wasted water
- Cleaning brushes attached by braided stainless steel cable to prevent theft
- Requires municipal water and sanitary drain or dry well hookup (check local codes)
- System is compliant with ADA, EPA, and Public Law 111-380 (No Lead) requirements

Bike Wash Station

Recommended Setbacks



The minimum space requirements for the Wash Station depend on whether there is a Wheel Chock, Public Work Stand, or Deluxe Public Work Stand installed.

Tools Included



- Water hose
- Drivetrain hose
- Scrubber brush
- Frame brush
- Wheel brush



Installation hardware
included



Carbon Steel
Stainless Steel



Powder Coat
Galvanized
Stainless Steel



2 year
warranty



Made in
the USA



Standard Colors



26215C Shown

Dimensions							
Model #	Description	Finish	Weight	Length	Width	Height	Space Requirement
26215C	Wash	Powder Coat	48 lbs.	12"	12"	74"	See Back
26215G	Wash	Galvanized	48 lbs.	12"	12"	74"	See Back
26215S	Wash	Stainless	48 lbs.	12"	12"	74"	See Back

Our Saris Infrastructure representatives can assist with custom layout and spacing to meet your room dimensions and desired bike capacity.

Saris Infrastructure 800.783.7257

www.sarisinfrastructure.com

Downloadable product resources available online:



CAD Files



SketchUp Files



Written Specs



Photos

INDOOR PUMP



SARIS
INFRASTRUCTURE



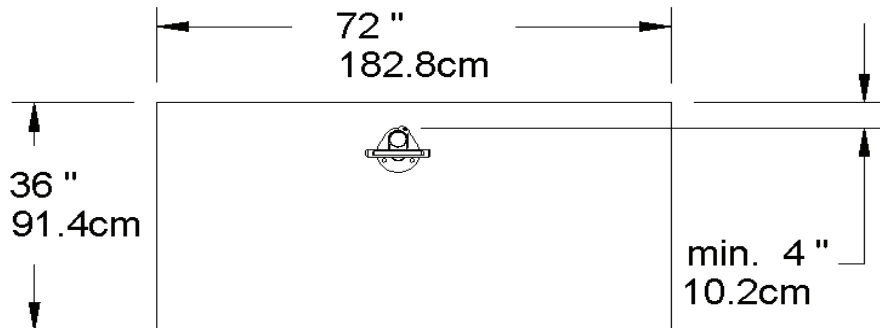
The High Security Indoor Pump is a perfect shared-use bike pump for inside installation. It is ideal for bike rooms and parking areas. A high quality, solid stainless steel piston rod, alloy handle and smash proof gauge cover provide maximum vandal resistance and durability. Heavy duty, cut-resistant hose and security fittings hold a replaceable pump head that handles both Presta and Schrader valves with ease.

Product Specifications

- Solid stainless steel piston rod, alloy handle, and smash proof gauge cover provide maximum vandal resistance
- Hose with braided steel core provides protection against cutting
- Choice of two hose lengths (18" or 35")
- Includes all-metal High Performance Pump Head with Presta and Schrader Valves
- 2 year warranty

Indoor Pump

Recommended Setbacks



The minimum space requirements for High Security Bike Pumps are meant to allow a cyclist and their bike access to the pump.



Installation hardware included



Body: Formed steel housing; DOM tubing
Hose: Rubber exterior; Braided steel core



Powder coat



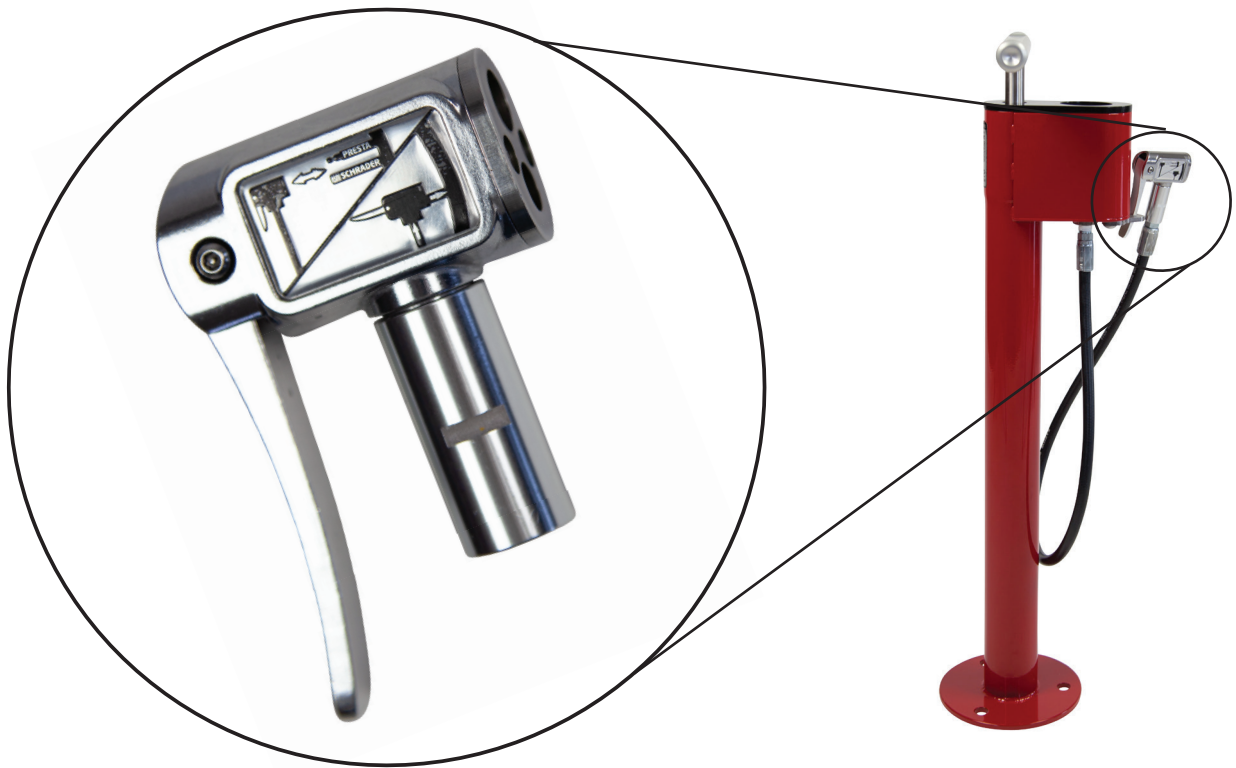
2 year warranty



Made in the USA



Standard Colors



26248 Shown

Dimensions

Model #	Finish	Type of Mount	Weight	Length	Width	Height	Space Requirement
26248	Powder Coat	Flange	20 lbs.	8"	8"	30"	See Back
26252	Powder Coat	Repair Stand	20 lbs.	8"	8"	30"	See Back

Our Saris Infrastructure representatives can assist with custom layout and spacing to meet your room dimensions and desired bike capacity.

Saris Infrastructure 800.783.7257

www.sarisinfrastructure.com

Downloadable product resources available online:



CAD Files



SketchUp Files



Written Specs



Photos

OUTDOOR PUMP

WITH GAUGE



SARIS
INFRASTRUCTURE



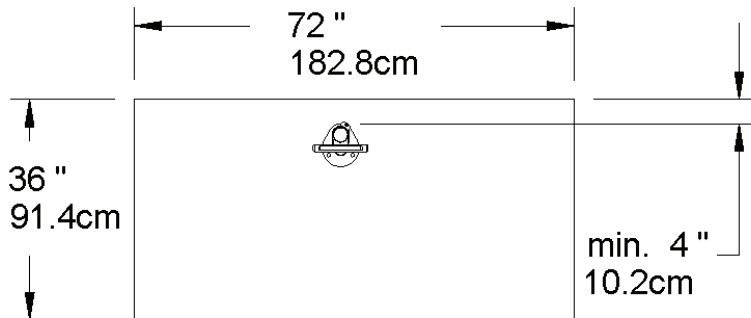
The High Security Outdoor Pump offers the highest security features to ensure that the pump and its components are ready for action when its needed by the users. Designed for outdoor use in all climates, this pump is a perfect combination of ruggedness, durability and value and is a great solution for campus, city or other public heavy-use settings.

Product Specifications

- Outdoor-rated stainless steel construction, completely sealed
- Proprietary long-life piston seal and solid pump rod
- Steel braided air hose core prevents cutting
- Includes all-metal High Performance Pump Head with Presta and Schrader Valves
- Longer hose available with mounting clip
- Optional tools attached by stainless steel aircraft cable: (2) tire levers and (1) 15mm open end wrench
- 2 year warranty

Outdoor Pump with Gauge

Recommended Setbacks



The minimum space requirements for High Security Bike Pumps are meant to allow a cyclist and their bike access to the pump.



Installation hardware included



Stainless Steel



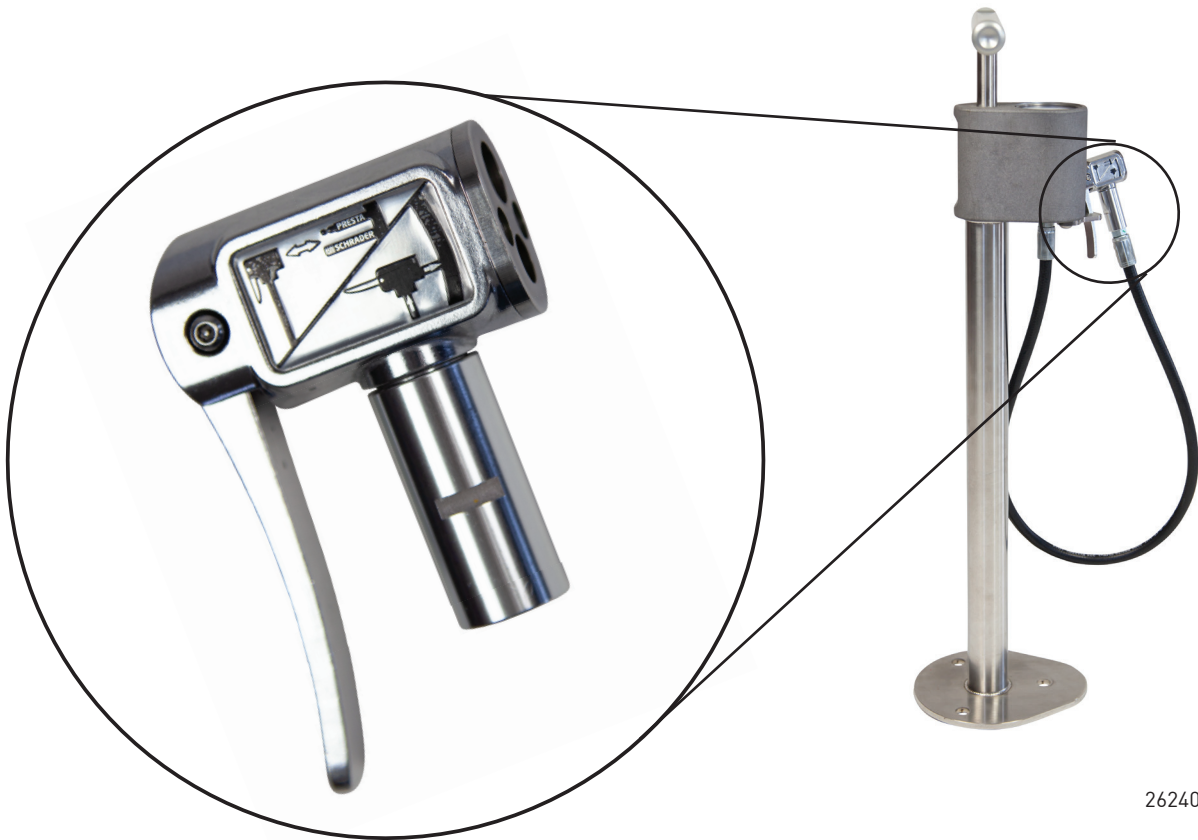
Stainless Steel



2 year warranty



Made in the USA



26240 Shown

Dimensions

Model #	Description	Type of Mount	Weight	Length	Width	Height	Space Requirement
26240	Short Hose	Floor	20 lbs.	8"	8"	30"	See Back
26246	Long Hose	Floor	20 lbs.	8"	8"	30"	See Back
26242	Long Hose	Repair Stand	20 lbs.	8"	8"	30"	See Back

Downloadable product resources available online:



CAD Files



SketchUp Files



Written Specs



Photos

Our Saris Infrastructure representatives can assist with custom layout and spacing to meet your room dimensions and desired bike capacity.

Saris Infrastructure 800.783.7257

www.sarisinfrastructure.com

PUBLIC TOOLBOX



SARIS
INFRASTRUCTURE



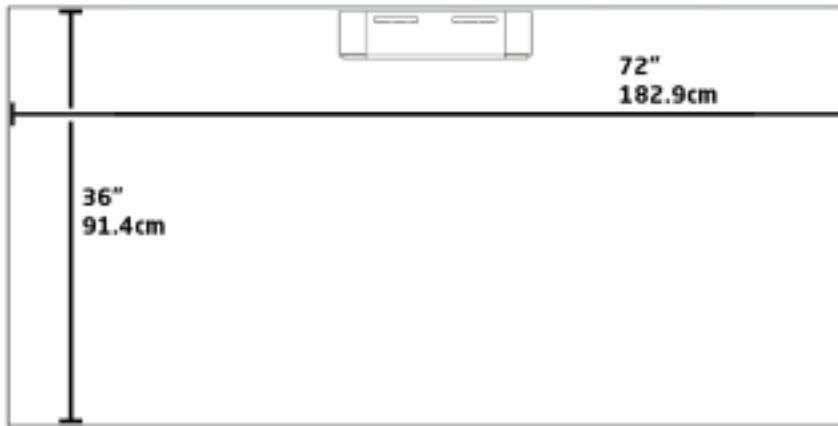
Space doesn't have to be a limiting factor when it comes to making a DIY, public-use bicycle repair area. The Public Toolbox is a super tough, wall-mounted option for providing access to the most commonly used bicycle repair tools. When paired with a manual or Electric Pump, you've got a super space-efficient DIY bicycle repair area that cyclists will love!

Product Specifications

- Nine bicycle specific tools, securely attached by stainless steel cable
- Wall mounted design; small footprint is perfect for small spaces
- Large space for custom branding on face plate (130 sq. in. / 838 sq. cm.), template provided by Saris Infrastructure
- Designed for indoor and outdoor use
- Strike plate to protect wall from tool strikes is available separately

Public Toolbox

Recommended Setbacks



The Public Toolbox is very versatile in where it can be installed. We recommend that it is placed in a location that allows a bicycle to access it either perpendicular or horizontal to the wall.

Tools Included



- Philips & standard screwdrivers
- Steel core tire levers (2)
- Headset/pedal wrench
- 8/10mm cone wrench
- 9/11mm cone wrench
- Torx T-25
- Hex key set



Installation
hardware
included



Thick-walled steel



Powder Coat



2 year
warranty



Made in
the USA



Standard Colors



Dimensions

Model #	Description	Type of Mount	Weight	Length	Width	Height	Space Requirement
26165	Public Toolbox	Wall Mount	29 lbs.	2.5"	11"	66"	See Back

Our Saris Infrastructure representatives can assist with custom layout and spacing to meet your room dimensions and desired bike capacity.

Saris Infrastructure 800.783.7257

www.sarisinfrastructure.com

Downloadable product resources available online:



CAD Files



SketchUp Files



Written Specs



Photos

PUBLIC WORK STAND



SARIS
INFRASTRUCTURE



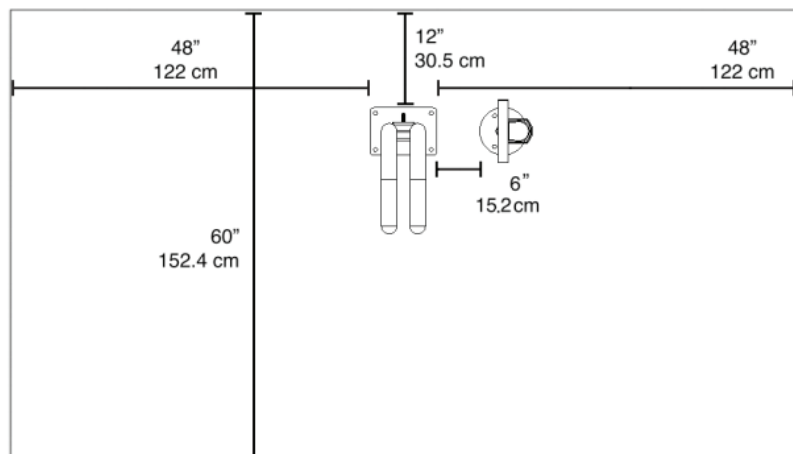
The Public Work Stand puts the tools where the people need them – on the trails, near the streets and in the bike rooms. With nine common bicycle tools permanently tethered to a bike holder and designed to be placed either inside or outside, the Public Work Stand will meet the spur-of-the-moment maintenance and repair needs that keep riders on their ride.

Product Specifications

- Universal bike mounting – hang by seat or top tube
- Nine common bicycle tools tethered by stainless steel aircraft cable
- Unique I-beam design eliminates possibility of locking a bike to the station
- ADA-compliant design
- QR code link to maintenance instructions for viewing from smart phone
- Installation hardware included

Public Work Stand

Recommended Setbacks



Installation hardware included



Thick-walled DOM tubing; TIG welded to laser-cut steel; stainless steel aircraft cable



Powder Coat



2 year warranty



Made in the USA



Standard Colors

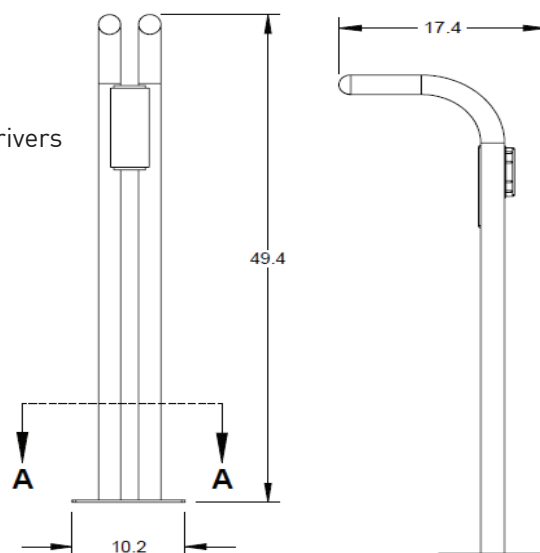
Site Layout:

- Minimum of 48" from side of Public Work Stand to wall or other objects
- Minimum of 12" from back of Public Work Stand to wall
- Minimum of 6" between Public Work Stand and Pump
- Minimum of 60" from perpendicular street
- Minimum of 96" from parallel street

Tools Included



- Philips & standard screwdrivers
- Steel core tire levers (2)
- Headset/pedal wrench
- 8/10mm cone wrench
- 9/11mm cone wrench
- Torx T-25
- Hex key set



Dimensions

Model #	Description	Type of Mount	Weight	Length	Width	Height	Space Requirement
26302C	Powder Coat	Flange	43 lbs.	8.5"	16"	49.5"	See Back
26302G	Galvanized	Flange	43 lbs.	8.5"	16"	49.5"	See Back
26302S	Stainless Steel	Flange	43 lbs.	8.5"	16"	49.5"	See Back

Downloadable product resources available online:



CAD Files



SketchUp Files



Written Specs



Photos

Our Saris Infrastructure representatives can assist with custom layout and spacing to meet your room dimensions and desired bike capacity.

Saris Infrastructure 800.783.7257

www.sarisinfrastructure.com

DELUXE PUBLIC WORK STAND



SARIS
INFRASTRUCTURE



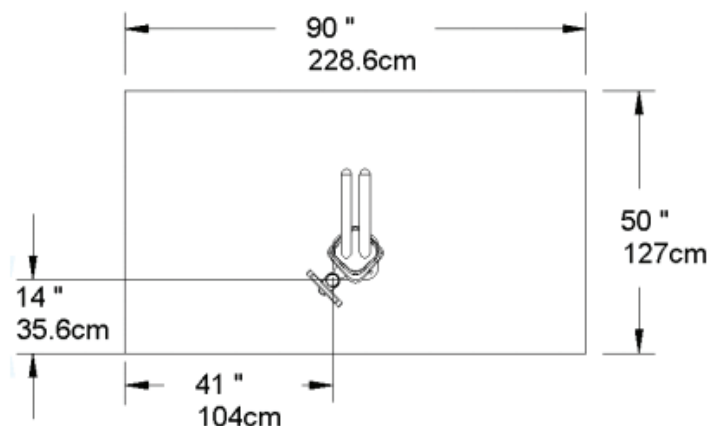
The Deluxe Public Work Stand puts the tools where the people need them — on the trails, near the streets, and in the bike rooms. Nine tools on retractable braided stainless steel cables brings durable, easy to use tools to the hands of cyclists. With a high quality vinyl decal, your branding stands out and reflects your commitment to the benefits of cycling.

Product Specifications

- Tools securely attach by retractable braided stainless steel cables
- Large surface area for custom branding/signage; optional Saris Infrastructure branding as shown is available by request
- Designed to directly interface with all three Saris Infrastructure High Security manual pumps and Wheel Chock attachments (sold separately)
- Long hose provides wide range of motion without touching the ground
- Impact and UV resistant front plate won't show wear and tear from pedal strikes
- ADA-compliant design

Deluxe Public Work Stand

Recommended Setbacks



- Minimum of 41" from side of Deluxe Public Work Stand to wall or other objects
- Minimum of 14" from back of Deluxe Public Work Stand to wall
- Minimum of 60" from an adjoining street or cycle path

Tools Included



- Philips & standard screwdrivers
- Steel core tire levers (2)
- Headset/pedal wrench
- 8/10mm cone wrench
- 9/11mm cone wrench
- Torx T-25
- Hex key set



Thick-walled DOM tubing;
TIG welded to laser-cut steel;
stainless steel aircraft cable



Powder Coat
Galvanized
Stainless Steel



Installation hardware
included



2 year
warranty



Made in
the USA



Standard Colors

Dimensions

Model #	Description	Type of Mount	Weight	Length	Width	Height	Space Requirement
26347C	Powder Coat	Flange	84 lbs.	10"	10"	55"	See Back
26347G	Galvanized	Flange	84 lbs.	10"	10"	55"	See Back
26347S	Stainless Steel	Flange	84 lbs.	10"	10"	55"	See Back

Our Saris Infrastructure representatives can assist with custom layout and spacing to meet your room dimensions and desired bike capacity.

Saris Infrastructure 800.783.7257

www.sarisinfrastructure.com

Downloadable product resources available online:



CAD Files



SketchUp Files



Written Specs



Photos

WHEEL CHOCK



SARIS
INFRASTRUCTURE



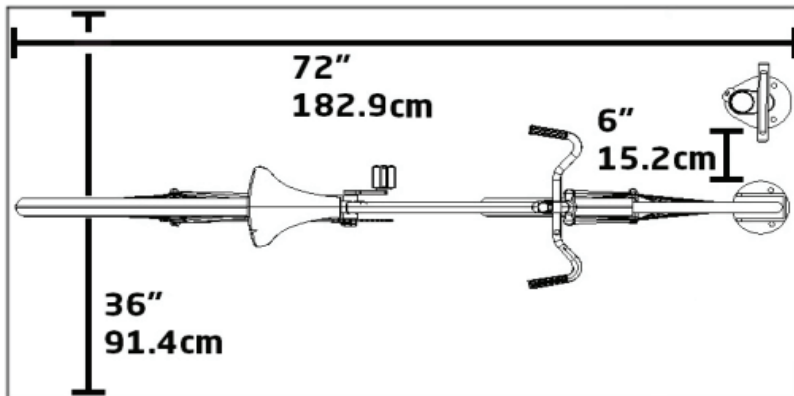
A simple design for a simple function. The Wheel Chock holds a bicycle upright, so you can more easily inflate tires or make minor adjustments. Available in a floor mount and repair mount option to work wherever you need it. The stylish cut-outs on the sides of the Wheel Chock provide a visual indication of what it's for.

Product Specifications

- Supports bikes without kickstands while inflating tires
- Tire friction stops roll-back, upright position eliminates trip hazard
- Accommodates tires up to 2.75" and wheel diameters up to 29"
- Cannot lock bikes to the Wheel Chock
- ADA compliant

Wheel Chock

Recommended Setbacks



- Minimum of 41" from side of Deluxe Public Work Stand to wall or other objects
- Minimum of 47" from back of Deluxe Public Work Stand to wall
- Minimum of 60" from an adjoining street or cycle path



Stainless Steel



Powder Coat
Galvanized
Stainless Steel



Installation hardware
included



2 year
warranty



Made in
the USA



Standard Colors



Dimensions

Model #	Finish	Type of Mount	Weight	Length	Width	Height	Space Requirement
26190C	Powder Coat	Floor	16 lbs.	6"	6"	25.5"	See Back
26190G	Galvanized	Floor	16 lbs.	6"	6"	25.5"	See Back
26190S	Stainless	Floor	16 lbs.	6"	6"	25.5"	See Back
26195C	Powder Coat	Repair Stand	16 lbs.	6"	6"	25.5"	See Back
26195G	Galvanized	Repair Stand	16 lbs.	6"	6"	25.5"	See Back
26195S	Stainless	Repair Stand	16 lbs.	6"	6"	25.5"	See Back

Downloadable product resources available online:



CAD Files



SketchUp Files



Written Specs



Photos

Our Saris Infrastructure representatives can assist with custom layout and spacing to meet your room dimensions and desired bike capacity.

Saris Infrastructure 800.783.7257

www.sarisinfrastructure.com

WALL MOUNTED VENDING MACHINE



SARIS
INFRASTRUCTURE

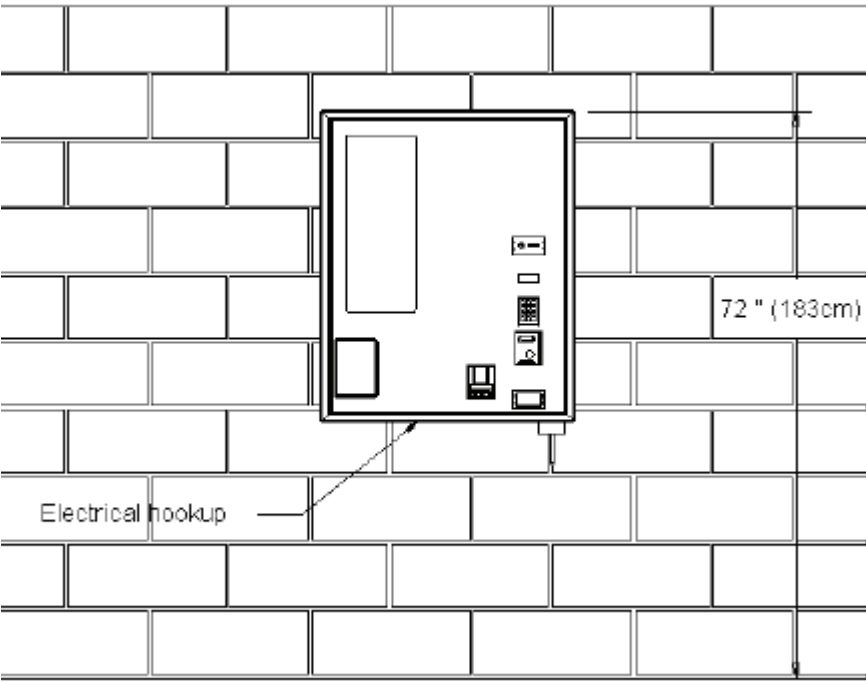


Many of the most commonly needed bicycle repair parts and accessories can be sold from a vending machine. Making these items available to cyclists in your community 24/7 from one of our vending machines can save someone's day and help them get home. Our machines are highly customizable, easy to maintain and use vending machine industry standard product delivery systems. They also provide considerable space for custom branding!

Product Specifications

- Specially designed to vend emergency bicycle repair parts and accessories
- Remote auditing via cellular network allows you to remotely monitor sales and inventory data
- Maintenance is extremely minimal and affordable since machines use common vending technology
- Well-suited for indoor and outdoor applications, and high-security features built in
- Machine can be customized to accept bills, coins, credit cards, university payment cards, and various types of gift cards
- Optional legs are available for freestanding installation

Wall Mounted Vending Machine



Cabinet: Heavy gauge steel
Product Window: Polycarbonate



Powder Coat
Stainless Steel



120V (North America)
/ 240V (Worldwide)



2 year
warranty



Made in
the USA



Standard Colors



Dimensions

Model #	Finish	Weight	Length	Width	Height
26181C	Wall Mount	150 lbs.	32"	13"	41"

Our Saris Infrastructure representatives can assist with custom layout and spacing to meet your room dimensions and desired bike capacity.

Saris Infrastructure 800.783.7257

www.sarisinfrastructure.com

Downloadable product resources available online:



CAD Files



SketchUp Files



Written Specs



Photos

FREE STANDING VENDING MACHINE



Many of the most commonly needed bicycle repair parts and accessories can be sold from a vending machine. Making these items available to cyclists in your community 24/7 from one of our vending machines can save someone's day and help them get home. Our machines are highly customizable, easy to maintain and use vending machine industry standard product delivery systems. They also provide considerable space for custom branding!

Product Specifications

- Specially designed to vend emergency bicycle repair parts and accessories
- Remote auditing via cellular network allows you to remotely monitor sales and inventory data
- Maintenance is extremely minimal and affordable since machines use common vending technology
- Well-suited for indoor and outdoor applications, and high-security features built in
- Machine can be customized to accept bills, coins, credit cards, university payment cards, and various types of gift cards
- 4 models available: Full Size Indoor, Full Size Outdoor, Indoor no cool., Wall Mounted

Free Standing Vending Machine

Customer Installation Examples



Cabinet: Heavy gauge steel
Product Window: Polycarbonate



Red and Black
Enamel



115V & max. 10.8
amps (North America)
*contact for worldwide
specs*



1 year
warranty



Made in
the USA



Standard Colors

Dimensions

Model #	Finish	w/Refrig.	Weight	Length	Width	Height	Space Requirement
25975	Full Size Outdoor	X	800 lbs.	39"	36"	72"	See Back
25979	Full Size Indoor	X	700 lbs.	39"	36"	72"	See Back
25978	Full Size Indoor		700 lbs.	39"	36"	72"	See Back

Our Saris Infrastructure representatives can assist with custom layout and spacing to meet your room dimensions and desired bike capacity.

Saris Infrastructure 800.783.7257

www.sarisinfrastructure.com

Downloadable product resources available online:



CAD Files



SketchUp Files



Written Specs



Photos

SKATEBOARD REPAIR STAND



SARIS
INFRASTRUCTURE



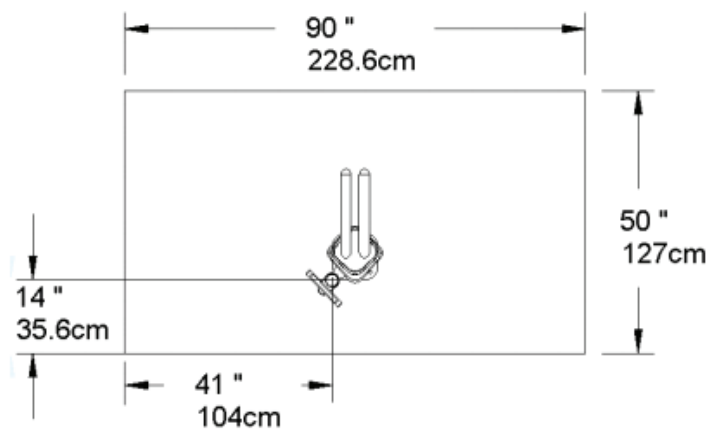
Nothin' kills your stoke at the skate park like loose hardware. The Skateboard Repair Station is there to save your 50/50's 100% of the time. Armed with the most commonly used wrenches and ratchets, this station bolts to concrete and provides a safe and convenient way to tighten any and all hardware on your skateboard.

Product Specifications

- Skateboard shape design intuitively shows use
- Two working positions make adjustments on either side of a skateboard easy
- Large surface area is great for sponsorship and signage
- Standard artwork included
- Comes with 11x17 Skateboard Repair sign to enhance visibility
- Universal height is ergonomic for children and adults to use

Skateboard Repair Stand

Recommended Setbacks



Carbon Steel



Powder Coat
Galvanized



Installation Hardware
included



2 year
warranty

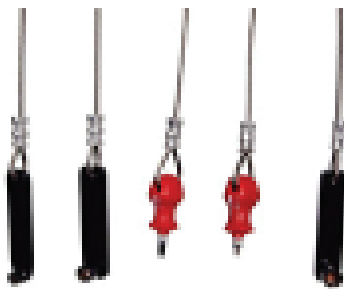


Made in
the USA



Standard Colors

Tools Included



- Philips screwdriver
- 5mm hex driver
- 5/16" axle nut wrench
- 3/8" mount hardware nut wrench
- 9/16" kingpin nut wrench



Dimensions

Model #	Finish	Type of Mount	Weight	Length	Width	Height	Space Requirement
26352C	Powder coat	Floor Mount	55 lbs.	12"	32"	36"	See Back
26352G	Galvanized	Floor Mount	55 lbs.	12"	32"	36"	See Back

Our Saris Infrastructure representatives can assist with custom layout and spacing to meet your room dimensions and desired bike capacity.

Saris Infrastructure 800.783.7257

www.sarisinfrastructure.com

Downloadable product resources available online:



CAD Files



SketchUp Files

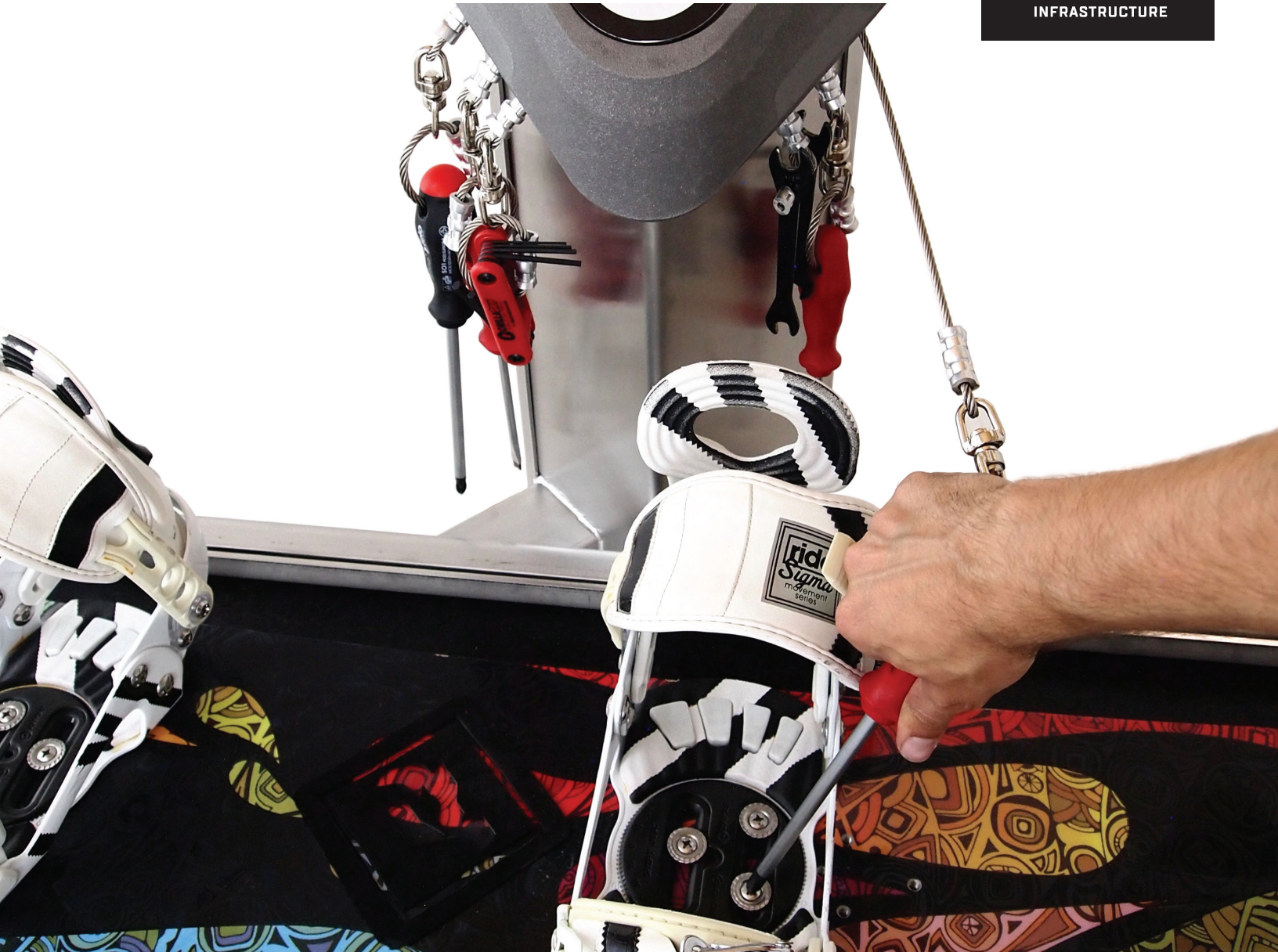


Written Specs



Photos

SKI/SNOWBOARD REPAIR STAND



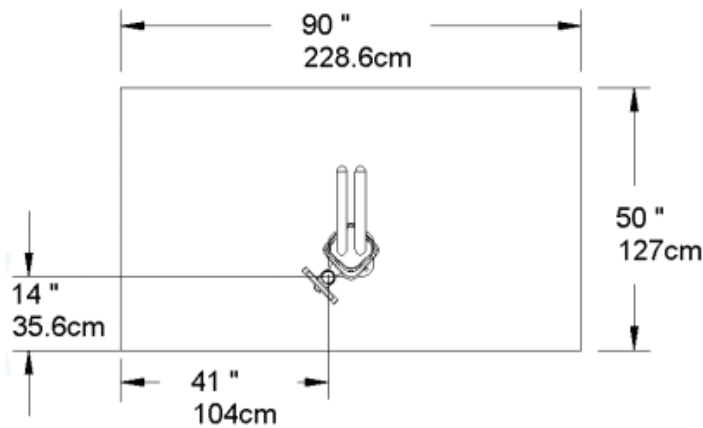
Shredding the gnar all day on the slopes can take a toll on your board(s) and the hardware occasionally needs an adjustment. While it's fairly common to find public-use tools tethered to something at ski hills and resorts, never before has a ski/snowboard repair station been this user friendly or easy on the eyes. Complete with a rubber coated work deck, this repair station makes your tune-ups quick and easy.

Product Specifications

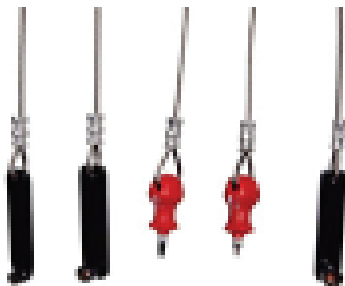
- Accommodates skis and snowboards on integrated work bench
- Includes tools for all common repairs and adjustments
- Tools attach by retractable stainless steel cables. No tangled tools!
- Nylon reinforced rubber bench surface protects skis and boards
- Stainless steel construction for superior corrosion resistance
- Large surface area on back of repair station is great for sponsorship and signage
- ADA-compliant design

Ski/Snowboard Repair Stand

Recommended Setbacks



Tools Included



- Philips #2 and #3 screwdrivers
- Pozidrive #3
- Flatblade screwdriver
- 8,9,10, and 11mm wrenches
- Hex key set



Stainless Steel



Stainless Steel



Installation Hardware included



2 year warranty



Made in the USA



Standard Colors



Dimensions

Model #	Finish	Type of Mount	Weight	Length	Width	Height	Space Requirement
26353	Stainless Steel	Floor Mount	150 lbs.	32"	48"	59"	See back

Our Saris Infrastructure representatives can assist with custom layout and spacing to meet your room dimensions and desired bike capacity.

Saris Infrastructure 800.783.7257 www.sarisinfrastructure.com

Downloadable product resources available online:



CAD Files



SketchUp Files



Written Specs



Photos