

BOTTLE FILL STATION



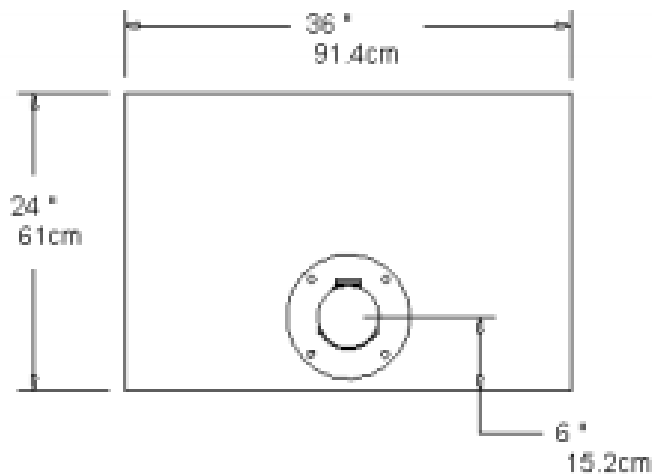
Staying hydrated just got easier with the Bottle Fill Station. This public-use water bottle refilling station is ideal for public parks, trailheads and anywhere cyclists may roam. The water bottle cut-out on the front of the station gives a visual indication of how to use it. Bottoms up!

Product Specifications

- Designed to work with all types of water bottles and hydration bladders, thereby eliminating plastic bottle waste
- High security, innovative design is suitable for any public setting
- Vandal-proof auto shut off water valve prevents water waste
- Requires municipal water and sanitary drain or dry well hookup (check local codes)
- Smooth laminar flow water filler nozzle and integrated inlet water strainer
- System is compliant with ADA, EPA, and Public Law 111-380 (No Lead) requirements.

Bottle Fill Station

Recommended Setbacks



Installation hardware included



Carbon Steel
Stainless Steel



Powder Coat
Galvanized
Stainless Steel



Recommended Temp
range for use 32
degrees and up



2 year
warranty



Made in
the USA



Standard Colors



Dimensions

Model #	Description	Finish	Weight	Length	Width	Height	Space Requirement
26223C	Bottle Fill Station	Powder Coat	38 lbs.	8"	8"	60"	See Above
26223G	Bottle Fill Station	Galvanized	38 lbs.	8"	8"	60"	See Above
26223S	Bottle Fill Station	Stainless	38 lbs.	8"	8"	60"	See Above

Our Saris Infrastructure representatives can assist with custom layout and spacing to meet your room dimensions and desired bike capacity.

Saris Infrastructure 800.783.7257

www.sarisinfrastructure.com

Downloadable product resources available online:



CAD Files



SketchUp Files



Written Specs



Photos